

SYMMETRY BALANCED PORTFOLIO

Interim Management Report of Fund Performance

For the Six-Month Period Ended September 30, 2024

This Interim Management Report of Fund Performance contains financial highlights but does not contain either the interim financial report or annual financial statements of the investment fund. You may obtain a copy of the interim financial report or annual financial statements, at no cost, by contacting us using one of the methods noted under Fund Formation and Series Information or by visiting the SEDAR+ website at www.sedarplus.ca.

Securityholders may also contact us using one of these methods to request a copy of the investment fund's proxy voting policies and procedures, proxy voting disclosure record or quarterly portfolio disclosure. For more information, please refer to the Fund's Simplified Prospectus and Fund Facts, which may also be obtained, at no cost, using any of the methods outlined above.

For the Fund's current net asset values per security and for more recent information on general market events, please visit our website.

A NOTE ON FORWARD-LOOKING STATEMENTS

This report may contain forward-looking statements that reflect our current expectations or forecasts of future events. Forward-looking statements include statements that are predictive in nature, depend upon or refer to future events or conditions, or include words such as "expects", "anticipates", "intends", "plans", "believes", "estimates", "preliminary", "typical" and other similar expressions. In addition, these statements may relate to future corporate actions, future financial performance of a fund or a security and their future investment strategies and prospects. Forward-looking statements are inherently subject to, among other things, risks, uncertainties and assumptions that could cause actual events, results, performance or prospects to differ materially from those expressed in, or implied by, these forward-looking statements. These risks, uncertainties and assumptions include, without limitation, general economic, political and market factors in North America and internationally, interest and foreign exchange rates, the volatility of global equity and capital markets, business competition, technological change, changes in government regulations, changes in securities laws and regulations, changes in tax laws, unexpected judicial or regulatory proceedings, catastrophic events, outbreaks of disease or pandemics (such as COVID-19), and the ability of Mackenzie to attract or retain key employees. The foregoing list of important risks, uncertainties and assumptions is not exhaustive. Please consider these and other factors carefully and do not place undue reliance on forward-looking statements.

The forward-looking information contained in this report is current only as of the date of this report. There should not be an expectation that such information will in all circumstances be updated, supplemented or revised whether as a result of new information, changing circumstances, future events or otherwise.



MACKENZIE
Investments

SYMMETRY BALANCED PORTFOLIO

INTERIM MANAGEMENT REPORT OF FUND PERFORMANCE | For the Period Ended September 30, 2024

Management Discussion of Fund Performance

November 12, 2024

This Management Discussion of Fund Performance presents the portfolio management team's view on the significant factors and developments that have affected the Fund's performance and outlook in the six-month period ended September 30, 2024 (the "period"). If the Fund was established during the period, "period" represents the period since inception.

In this report, "Mackenzie" and "the Manager" refer to Mackenzie Financial Corporation, the manager of the Fund. In addition, net asset value ("NAV") refers to the value of the Fund as calculated for transaction purposes, on which the discussion of Fund performance is based.

Please read *A Note on Forward-Looking Statements* on the first page of this document.

Results of Operations

Investment Performance

The performance of all series in the current and previous periods is shown in the *Past Performance* section of the report. Performance will vary by series primarily because fees and expenses differ between series, or because securities of a series were not issued and outstanding for the entire reporting period. Please refer to the *Fund Formation and Series Information* section of this report for the varying management and administration fees payable by each series. The following comparison to market indices is intended to help investors understand the Fund's performance relative to the general performance of the markets. However, the Fund's mandate may be different from that of the indices shown.

During the period, the Fund's Series A and Series LB securities returned 6.3% (after deducting fees and expenses paid by the series). This compares with a return of 5.6% for the Fund's broad-based index, the FTSE Canada Universe Bond Index, and a return of 7.6% for a blended index.* All index and series returns are calculated on a total return basis in Canadian dollar terms. Investors cannot invest in an index without incurring fees, expenses and commissions, which are not reflected in the index returns.

Global equity markets generally rose over the period. Share prices increased in relation to corporate earnings, with gains in U.S. markets driven mainly by a small number of mega-capitalization stocks. The global economy was resilient as inflation continued to slow across most major markets, although unemployment moved slightly higher. Canadian equities rose despite volatility, with the financials sector and mining stocks leading market performance. The U.S. Federal Reserve, European Central Bank, Bank of England and Bank of Canada lowered interest rates, and global bond yields declined. Meanwhile, the Bank of Japan raised its policy rate to 0.25% from zero.

Within the MSCI AC (All Country) World (Net) Index, Asia Pacific (ex Japan) and North America were the best-performing regions in Canadian dollar terms, while Latin America and Japan were the weakest. The utilities, real estate and communication services sectors were the strongest performers, while energy, materials and health care were the weakest.

Within the S&P/TSX Composite Index, materials, utilities and financials were the best-performing sectors, while health care, industrials and energy were the weakest.

The Fund outperformed the broad-based index because of its allocation to equities, which outperformed fixed income in the period. Given the Fund's mandate, the return of the blended index is a more meaningful comparison.

* The blended index is composed of a 45% weighting in the FTSE Canada Universe Bond Index (returned 5.6%), a 30% weighting in the S&P/TSX Composite Index (returned 10.0%), a 20% weighting in the MSCI AC (All Country) World (Net) Index (returned 9.6%) and a 5% weighting in the ICE BofA Global Broad Market (Hedged) Index (returned 3.9%).

The Fund underperformed the blended index. The Fund's asset allocation contributed to performance, while the selection of underlying funds within each asset class detracted from performance.

Among the underlying funds in the portfolio, the largest detractors from relative performance were Mackenzie Global Macro Fund, Mack US Equity Pool and Mack Comprehensive Equity Pool (respectively representing 3.0%, 18.1% and 8.6% of net assets at period-end). The largest contributors to relative performance were Mackenzie US Investment Grade Corporate Bond Index ETF (CAD-Hedged), Mackenzie Enhanced Equity Risk Premia Fund and Mack Canadian Bond Pool (respectively representing 6.2%, 1.6% and 16.6%).

Changes to the portfolio included a new allocation to Mackenzie Core Plus Canadian Fixed Income ETF.

Net Assets

The Fund's net assets increased by 1.9% during the period to \$2.1 billion. This change was composed primarily of \$131.6 million in net income (including any interest and/or dividend income) from investment performance, after deducting fees and expenses, and a decrease of \$91.8 million due to net securityholder activity (including sales, redemptions and cash distributions).

Fees and Expenses

The annualized management expense ratio ("MER") for each series during the period ended September 30, 2024, was generally similar to the MER for the year ended March 31, 2024. Total expenses paid vary from period to period mainly as a result of changes in average assets in each series. The MERs for all series are presented in the *Financial Highlights* section of this report.

Recent Developments

The portfolio management team believes that although U.S. economic growth is moderating, with the job market showing early but convincing signs of deterioration, the United States is not in the early stages of a recession. Federal government spending is still high, boosting growth, and the team believes additional cuts to the federal funds rate by the U.S. Federal Reserve would stabilize the downward trend of the labour market and the economy.

In anticipation of further interest rate cuts by developed central banks, the team believes duration exposure (sensitivity to interest rates) has become more beneficial. Given expensively valued global equities, the team favours diversifying into cheaper markets with positive economic catalysts, such as Europe and Asia. The team believes that maintaining a well-diversified investment portfolio is crucial for managing risk and achieving long-term financial stability.

The following changes to the Mackenzie Funds' Independent Review Committee occurred:

- effective September 13, 2023, Saijal Patel was appointed;
- effective March 5, 2024, Atul Tiwari resigned; and
- effective April 30, 2024, the terms for Robert Hines and George Hucal expired, and Rebecca Cowdery was appointed.

Related Party Transactions

Management and Administration Services

For each applicable series, the Fund paid management fees and administration fees to the Manager at the annual rates specified under *Fund Formation and Series Information* in this report and as more fully described in the Prospectus. In return for the administration fees, the Manager pays all costs and expenses (other than certain specified fund costs) required to operate the Fund that are not included in management fees. See also *Management Fees*.

SYMMETRY BALANCED PORTFOLIO

INTERIM MANAGEMENT REPORT OF FUND PERFORMANCE | For the Period Ended September 30, 2024

Other Related Party Transactions

Investment funds managed by Mackenzie and its affiliates may invest in the Fund. All these investments are made on a prospectus-exempt basis in accordance with the investment objectives of those funds. At September 30, 2024, funds managed by The Canada Life Assurance Company and Canada Life Investment Management Ltd. owned 0.5% of the Fund's NAV. All related party transactions are based on the NAV per security on each transaction day. As a result of these investments, the Fund may be subject to large transaction risk as discussed in the Fund's Simplified Prospectus. Mackenzie manages this risk to reduce the possibility of any adverse effect on the Fund or on its investors, through such processes as requiring advance notice of large redemptions.

At September 30, 2024, Mackenzie had an investment of \$0.02 million in the Fund (less than 0.1% of the Fund's NAV).

During the period, the Fund received \$0.3 million in income distributions from investments in exchange-traded funds ("ETFs") managed by Mackenzie to offset fees paid within those ETFs. There is no assurance that these distributions will continue in the future.

The Fund did not rely on an approval, positive recommendation or standing instruction from the Mackenzie Funds' Independent Review Committee with respect to any related party transactions in the period.

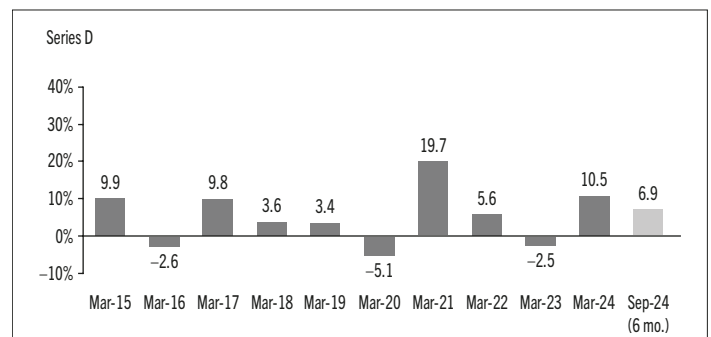
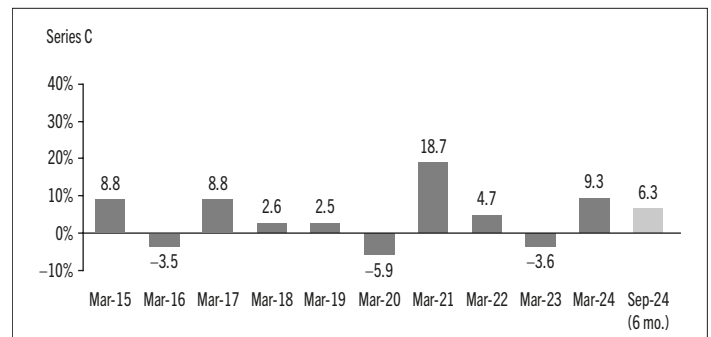
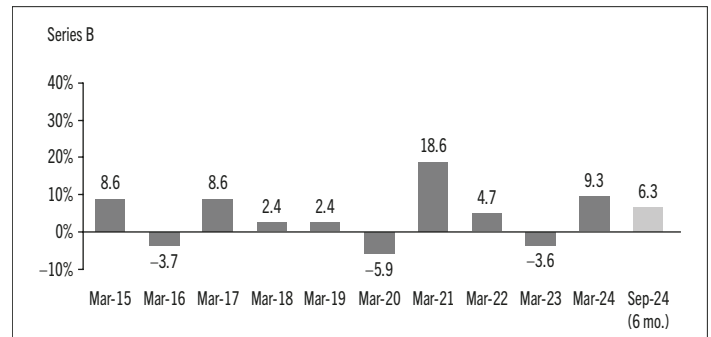
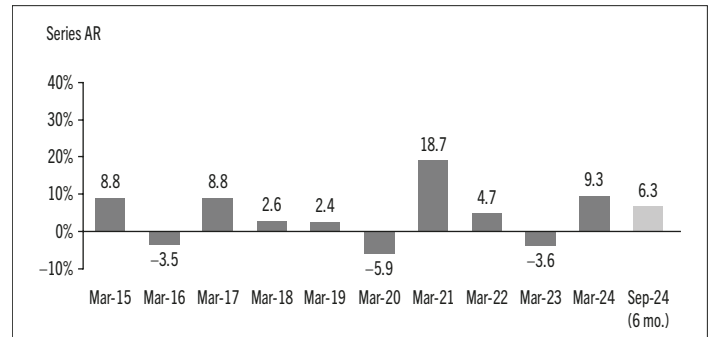
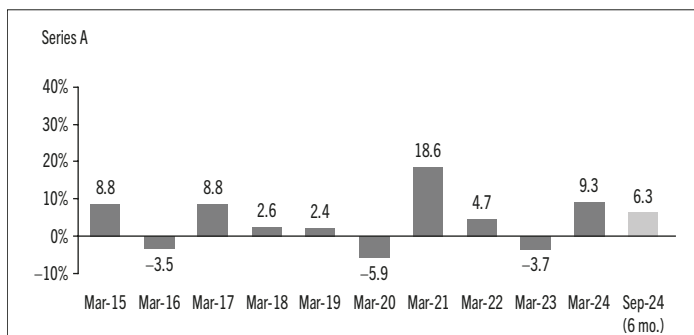
Past Performance

The Fund's performance information assumes all distributions made by the Fund in the periods presented are reinvested in additional securities of the relevant series of the Fund. The performance information does not take into account sales, redemption, distribution or other optional charges, or income taxes payable by any investor that would have reduced returns or performance. The past performance of the Fund is not necessarily an indication of how it will perform in the future.

If you hold this Fund outside of a registered plan, income and capital gains distributions paid to you increase your income for tax purposes whether paid to you in cash or reinvested in additional securities of the Fund. The amount of reinvested taxable distributions is added to the adjusted cost base of the securities that you own. This would decrease your capital gain or increase your capital loss when you later redeem from the Fund, thereby ensuring that you are not taxed on this amount again. Please consult your tax advisor regarding your personal tax situation.

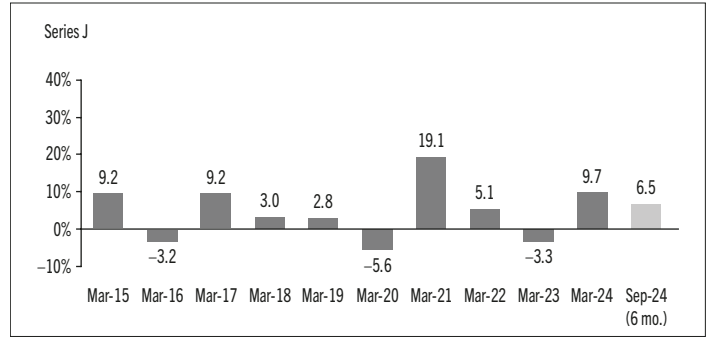
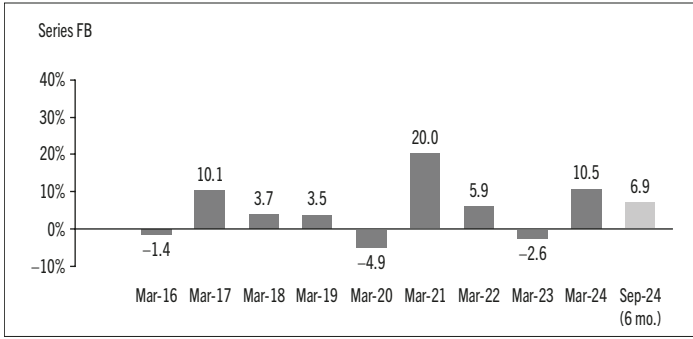
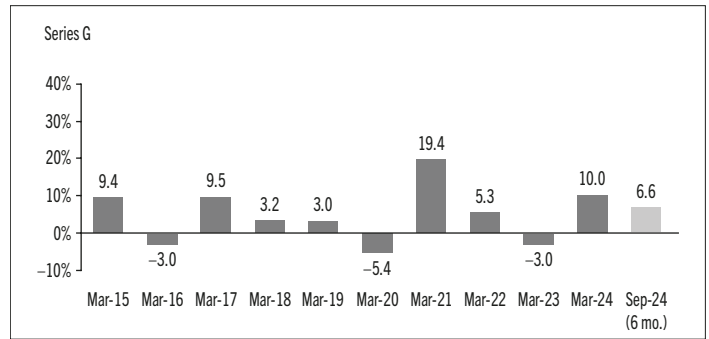
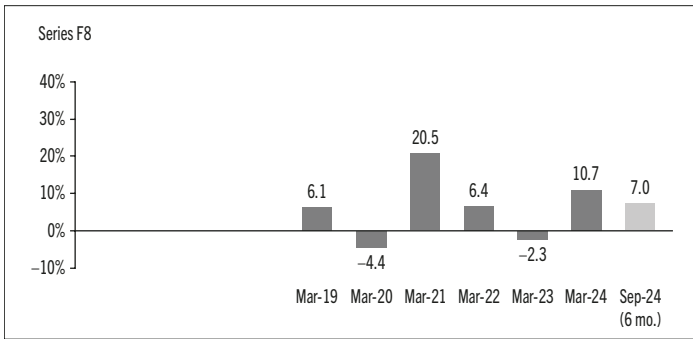
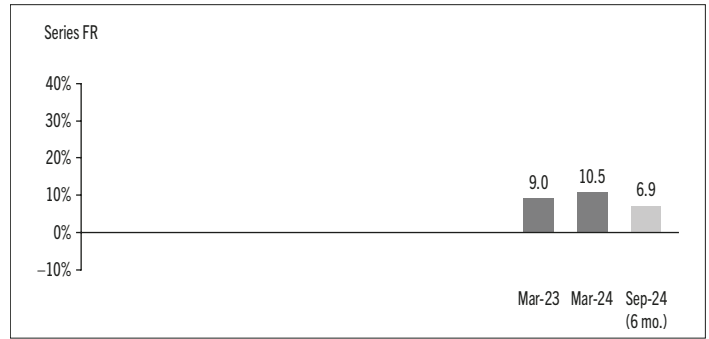
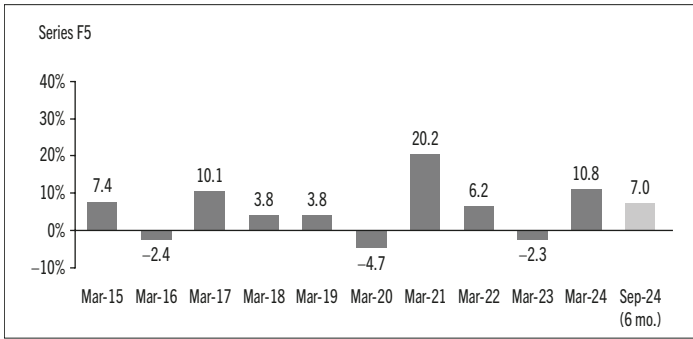
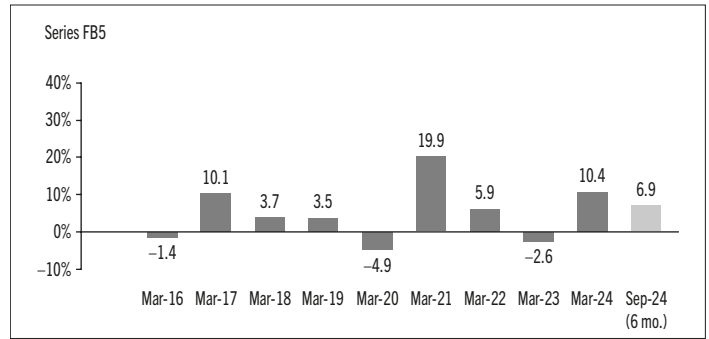
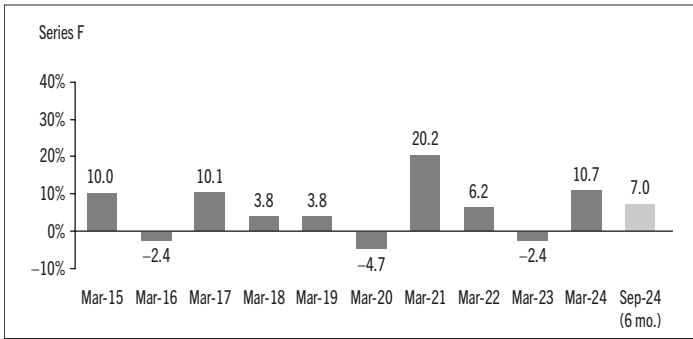
Year-by-Year Returns

The following bar charts present the performance of each series of the Fund for each of the fiscal periods shown. The charts show, in percentage terms, how much an investment made on the first day of each fiscal period, or on the series inception or reinstatement date, as applicable, would have increased or decreased by the last day of the fiscal period presented. Series inception or reinstatement dates can be found under *Fund Formation and Series Information*.



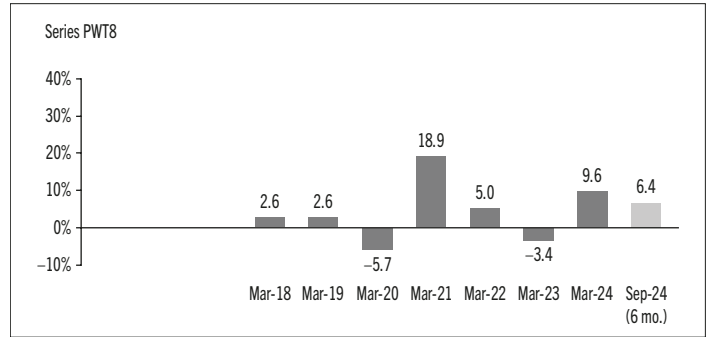
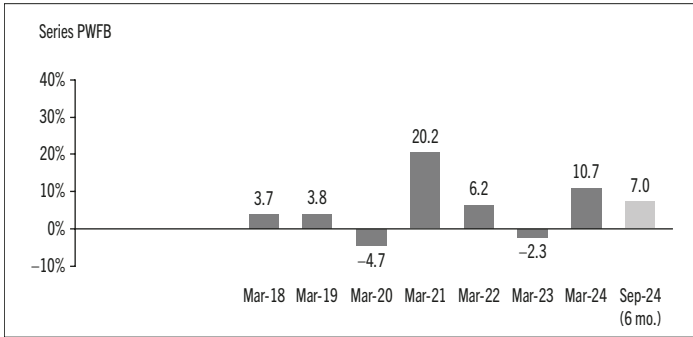
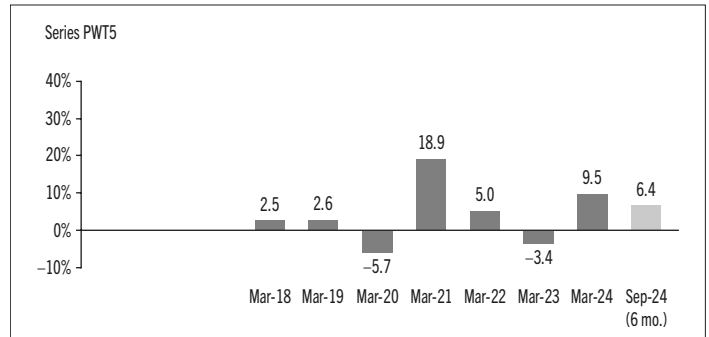
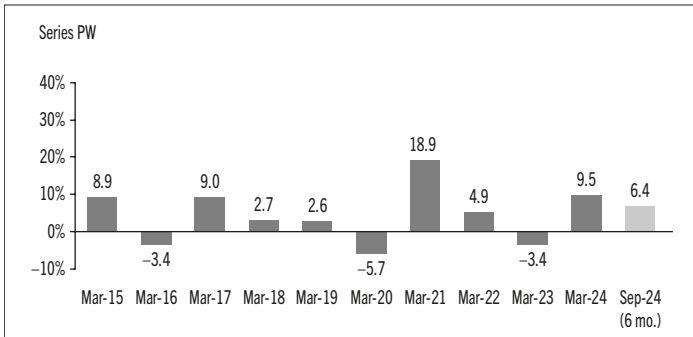
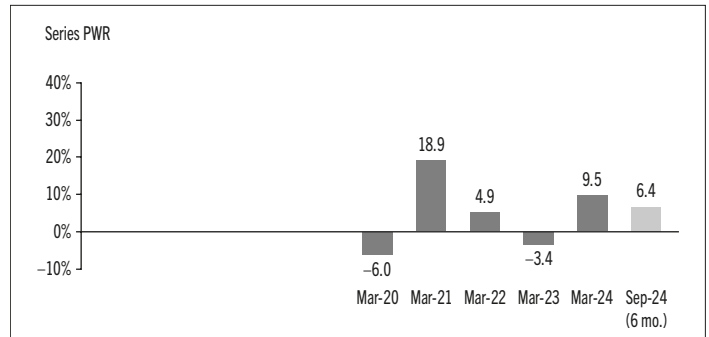
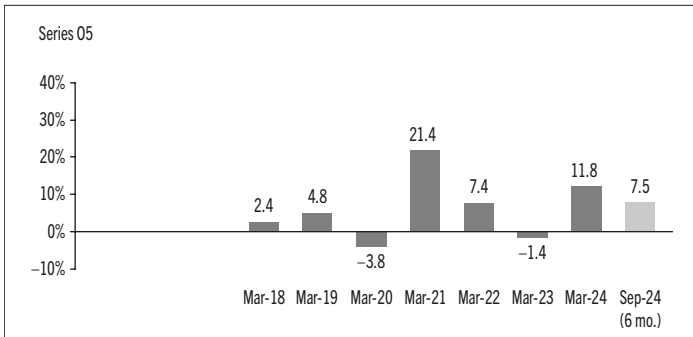
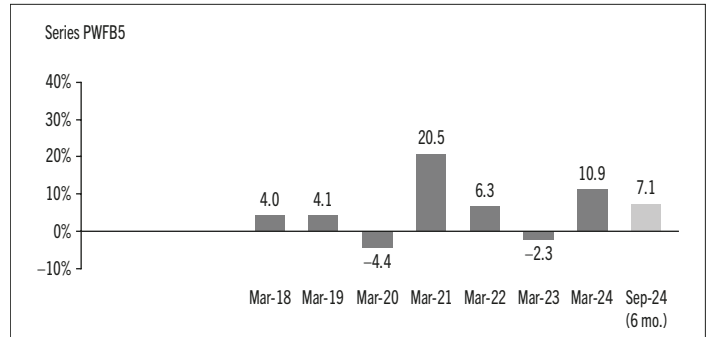
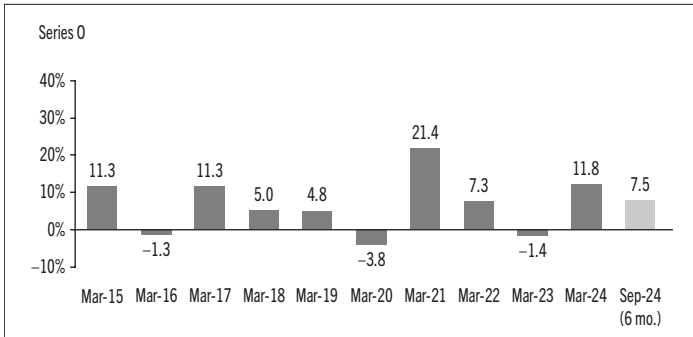
SYMMETRY BALANCED PORTFOLIO

INTERIM MANAGEMENT REPORT OF FUND PERFORMANCE | For the Period Ended September 30, 2024



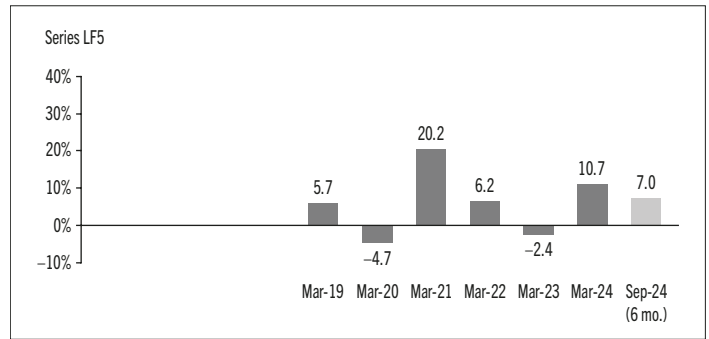
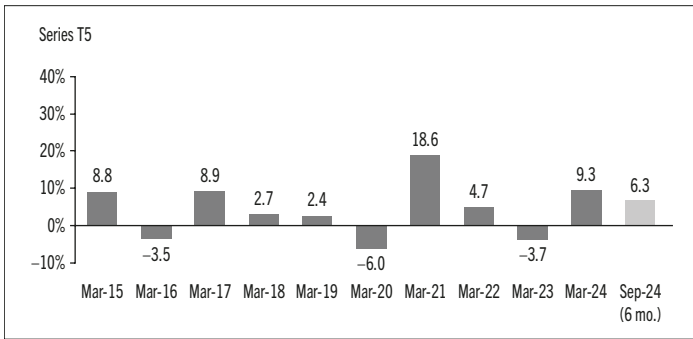
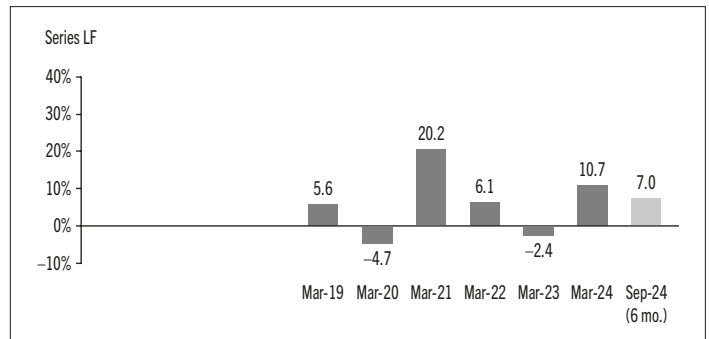
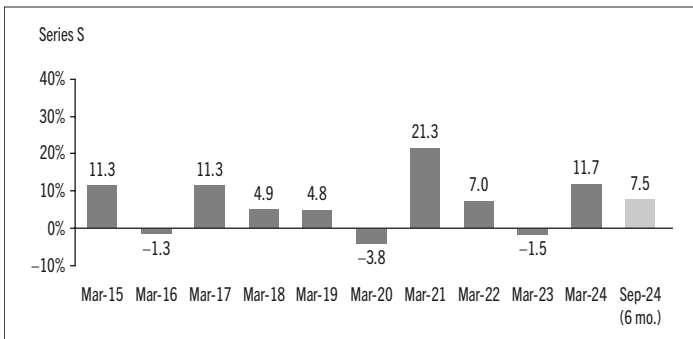
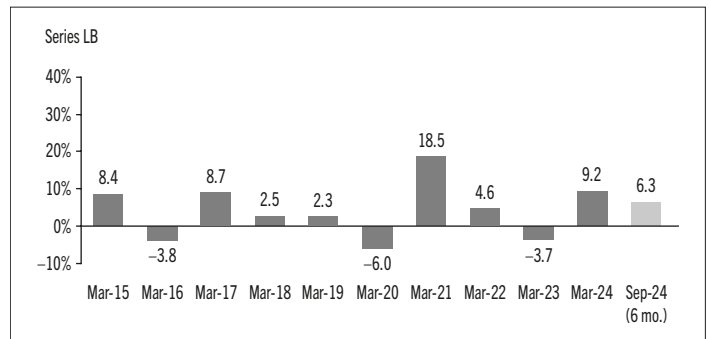
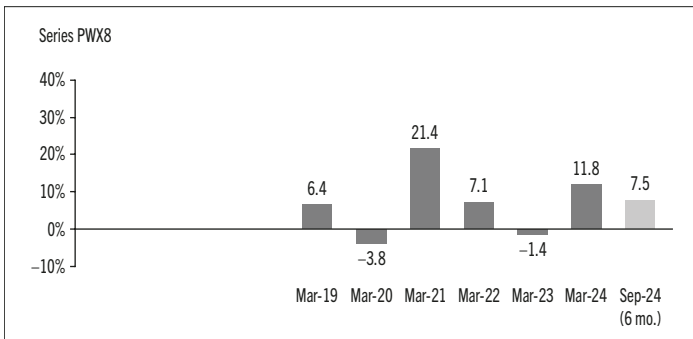
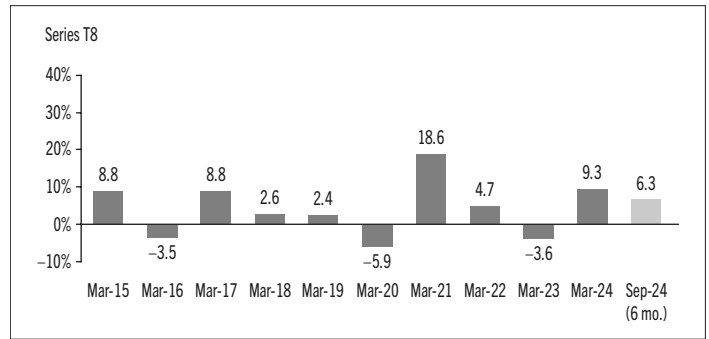
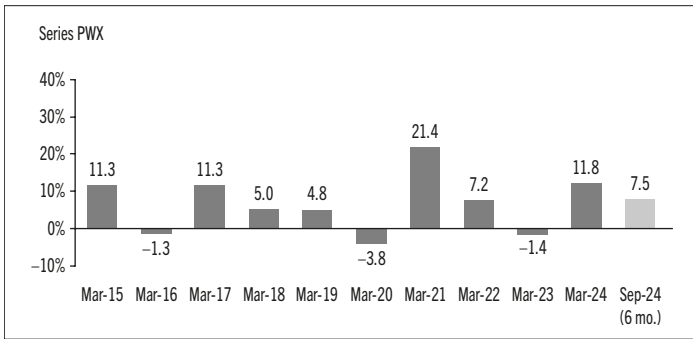
SYMMETRY BALANCED PORTFOLIO

INTERIM MANAGEMENT REPORT OF FUND PERFORMANCE | For the Period Ended September 30, 2024



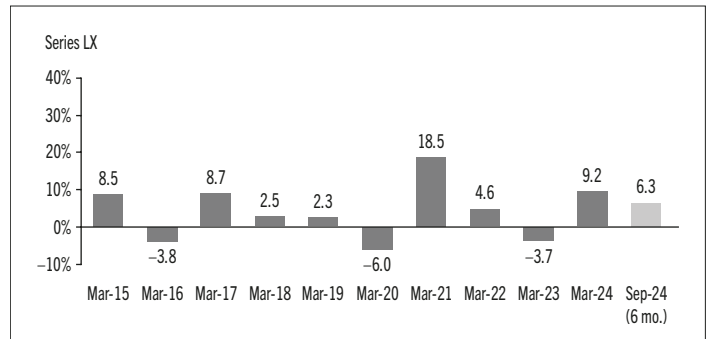
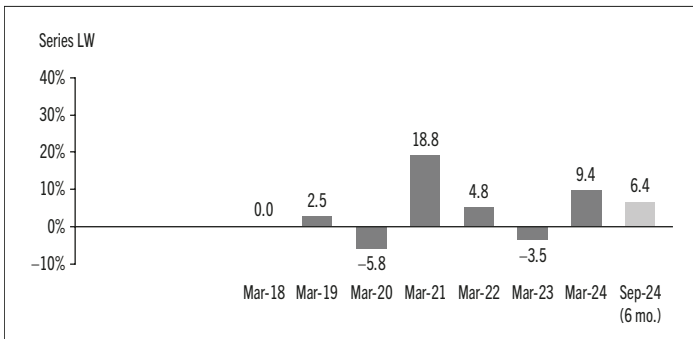
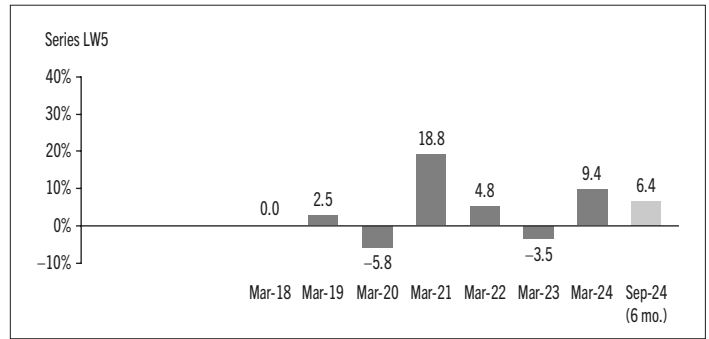
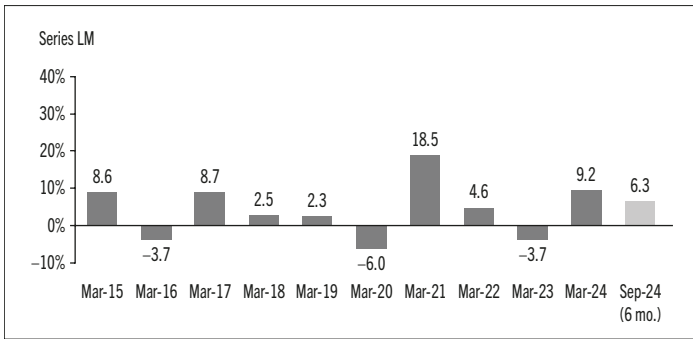
SYMMETRY BALANCED PORTFOLIO

INTERIM MANAGEMENT REPORT OF FUND PERFORMANCE | For the Period Ended September 30, 2024



SYMMETRY BALANCED PORTFOLIO

INTERIM MANAGEMENT REPORT OF FUND PERFORMANCE | For the Period Ended September 30, 2024



SYMMETRY BALANCED PORTFOLIO

INTERIM MANAGEMENT REPORT OF FUND PERFORMANCE | For the Period Ended September 30, 2024

Summary of Investment Portfolio at September 30, 2024

| EFFECTIVE PORTFOLIO ALLOCATION | % OF NAV |
|--------------------------------|----------|
| Equities | 62.8 |
| Equities | 54.4 |
| Long equity futures* | 8.4 |
| Short equity futures* | – |
| Bonds | 44.4 |
| Bonds | 34.4 |
| Long bond futures* | 10.0 |
| Short bond futures* | – |
| Mutual funds | 0.5 |
| Commodities | 0.3 |
| Long commodities futures* | 0.3 |
| Short commodities futures* | – |
| Cash and cash equivalents** | (1.0) |
| Other assets (liabilities) | (7.0) |

| EFFECTIVE REGIONAL ALLOCATION | % OF NAV |
|-------------------------------|----------|
| United States | 49.9 |
| Canada | 36.9 |
| Other | 7.3 |
| United Kingdom | 3.1 |
| Germany | 2.8 |
| Japan | 1.4 |
| France | 1.4 |
| Australia | 1.0 |
| Switzerland | 1.0 |
| Netherlands | 0.9 |
| China | 0.7 |
| Mexico | 0.6 |
| Ireland | 0.5 |
| Spain | 0.5 |
| Cash and cash equivalents** | (1.0) |
| Other assets (liabilities) | (7.0) |

| EFFECTIVE SECTOR ALLOCATION | % OF NAV |
|-----------------------------|----------|
| Corporate bonds | 24.2 |
| Financials | 11.1 |
| Foreign government bonds | 11.1 |
| Information technology | 10.7 |
| Equity futures | 8.4 |
| Industrials | 6.4 |
| Health care | 4.9 |
| Consumer discretionary | 4.7 |
| Energy | 4.3 |
| Federal bonds | 4.3 |
| Provincial bonds | 4.1 |
| Other | 4.0 |
| Materials | 3.4 |
| Communication services | 3.1 |
| Consumer staples | 3.0 |
| Commodities | 0.3 |
| Cash and cash equivalents** | (1.0) |
| Other assets (liabilities) | (7.0) |

* Notional values represent 10.0% of NAV for long bond futures, 8.4% of NAV for long equity futures, 0.3% of NAV for long commodities futures, –1.7% of NAV for short bond futures, –3.9% of NAV for short equity futures and –0.3% of NAV for short commodities futures.

** A portion of the Fund's effective cash allocation is invested in Series R securities of a money market fund managed by Mackenzie.

The effective allocation shows the portfolio, regional or sector exposure of the Fund calculated by combining its direct and indirect investments.

TOP 25 LONG POSITIONS

| Issuer/Underlying Fund | % OF NAV |
|---|----------|
| Mack US Equity Pool Series R | 18.1 |
| Mack Canadian Bond Pool Series R | 16.6 |
| Mack Canadian Equity Pool Series R | 14.6 |
| Mack Comprehensive Equity Pool Series R | 8.6 |
| Mackenzie North American Corporate Bond Fund Series R | 6.9 |
| Mackenzie US Investment Grade Corporate Bond Index ETF (CAD-Hedged) | 6.2 |
| Mack EAFE Equity Pool Series R | 5.4 |
| Mackenzie Broad Risk Premia Collection Fund Series R | 3.1 |
| Mackenzie Global Macro Fund Series R | 3.0 |
| Mackenzie Global Dividend Fund Series R | 2.5 |
| Cash and cash equivalents** | 1.8 |
| Mackenzie Core Plus Canadian Fixed Income ETF | 1.7 |
| Mackenzie Emerging Markets Bond Index ETF (CAD-Hedged) | 1.7 |
| Mackenzie Enhanced Equity Risk Premia Fund Series R | 1.6 |
| Mack Global Bond Pool Series R | 1.3 |
| Mackenzie Sovereign Bond Fund Series R | 1.2 |
| Mackenzie Enhanced Fixed Income Risk Premia Fund Series R | 1.1 |
| Mackenzie Multi-Strategy Absolute Return Fund Series R | 0.9 |
| Mackenzie International Quantitative Large Cap Fund Series R | 0.8 |
| Mackenzie Emerging Markets Large Cap Fund Series R | 0.8 |
| Mackenzie International Dividend Fund Series R | 0.5 |
| Mackenzie Global Inflation-Linked Fund Series R | 0.4 |
| Mackenzie Canadian All Corporate Bond Index ETF | 0.4 |
| Mackenzie Emerging Markets Small Cap Fund Series R | 0.3 |
| Mackenzie US Quantitative Small Cap Fund Series R | 0.2 |

Top long positions as a percentage of total net asset value **99.7**

TOP 25 SHORT POSITIONS

| Issuer | % OF NAV |
|--------------------------|----------|
| S&P/TSX 60 Index Futures | – |

Top short positions as a percentage of total net asset value **–**

For the prospectus and other information about the underlying fund(s) held in the portfolio, visit www.mackenzieinvestments.com or www.sedarplus.ca.

The investments and percentages may have changed since September 30, 2024, due to the ongoing portfolio transactions of the Fund. Quarterly updates of holdings are available within 60 days of the end of each quarter except for March 31, the Fund's fiscal year-end, when they are available within 90 days.

SYMMETRY BALANCED PORTFOLIO

INTERIM MANAGEMENT REPORT OF FUND PERFORMANCE | For the Period Ended September 30, 2024

Financial Highlights

The following tables show selected key financial information about the Fund and are intended to help you understand the Fund's financial performance for each of the fiscal periods presented below. If during the period a fund or series was established or reinstated, "period" represents the period from inception or reinstatement to the end of that fiscal period. Series inception or reinstatement dates can be found under *Fund Formation and Series Information*.

THE FUND'S NET ASSETS PER SECURITY (\$)¹

| Series A | Sep. 30 2024 | Mar. 31 2024 | Mar. 31 2023 | Mar. 31 2022 | Mar. 31 2021 | Mar. 31 2020 |
|---|-------------------------|-------------------------|-------------------------|-------------------------|-------------------------|-------------------------|
| Net assets, beginning of period | 16.29 | 15.15 | 15.73 | 15.87 | 13.73 | 15.18 |
| Increase (decrease) from operations: | | | | | | |
| Total revenue | 0.27 | 0.50 | 0.41 | 0.72 | 0.82 | 0.60 |
| Total expenses | (0.19) | (0.35) | (0.34) | (0.37) | (0.35) | (0.35) |
| Realized gains (losses) for the period | 0.11 | 0.19 | 0.04 | 0.43 | 0.40 | 0.38 |
| Unrealized gains (losses) for the period | 0.82 | 0.99 | (0.77) | (0.04) | 1.74 | (1.40) |
| Total increase (decrease) from operations² | 1.01 | 1.33 | (0.66) | 0.74 | 2.61 | (0.77) |
| Distributions: | | | | | | |
| From net investment income (excluding Canadian dividends) | – | (0.13) | – | (0.19) | (0.04) | (0.20) |
| From Canadian dividends | – | (0.06) | – | (0.49) | (0.28) | (0.13) |
| From capital gains | – | (0.07) | – | (0.22) | (0.10) | (0.28) |
| Return of capital | – | – | – | – | – | – |
| Total annual distributions³ | – | (0.26) | – | (0.90) | (0.42) | (0.61) |
| Net assets, end of period | 17.32 | 16.29 | 15.15 | 15.73 | 15.87 | 13.73 |
| Series AR | Sep. 30 2024 | Mar. 31 2024 | Mar. 31 2023 | Mar. 31 2022 | Mar. 31 2021 | Mar. 31 2020 |
| Net assets, beginning of period | 13.38 | 12.45 | 12.91 | 13.03 | 11.28 | 12.46 |
| Increase (decrease) from operations: | | | | | | |
| Total revenue | 0.22 | 0.41 | 0.33 | 0.59 | 0.67 | 0.50 |
| Total expenses | (0.15) | (0.29) | (0.27) | (0.30) | (0.29) | (0.29) |
| Realized gains (losses) for the period | 0.09 | 0.22 | 0.12 | 0.34 | 0.26 | 0.15 |
| Unrealized gains (losses) for the period | 0.68 | 0.81 | (0.63) | (0.03) | 1.43 | (1.16) |
| Total increase (decrease) from operations² | 0.84 | 1.15 | (0.45) | 0.60 | 2.07 | (0.80) |
| Distributions: | | | | | | |
| From net investment income (excluding Canadian dividends) | – | (0.11) | – | (0.16) | (0.03) | (0.16) |
| From Canadian dividends | – | (0.05) | – | (0.40) | (0.23) | (0.11) |
| From capital gains | – | (0.06) | – | (0.18) | (0.08) | (0.23) |
| Return of capital | – | – | – | – | – | – |
| Total annual distributions³ | – | (0.22) | – | (0.74) | (0.34) | (0.50) |
| Net assets, end of period | 14.22 | 13.38 | 12.45 | 12.91 | 13.03 | 11.28 |

| Series B | Sep. 30 2024 | Mar. 31 2024 | Mar. 31 2023 | Mar. 31 2022 | Mar. 31 2021 | Mar. 31 2020 |
|---|-------------------------|-------------------------|-------------------------|-------------------------|-------------------------|-------------------------|
| Net assets, beginning of period | 11.96 | 11.13 | 11.55 | 11.66 | 10.09 | 11.16 |
| Increase (decrease) from operations: | | | | | | |
| Total revenue | 0.20 | 0.37 | 0.30 | 0.53 | 0.60 | 0.44 |
| Total expenses | (0.14) | (0.26) | (0.25) | (0.27) | (0.26) | (0.26) |
| Realized gains (losses) for the period | 0.08 | 0.15 | 0.02 | 0.33 | 0.30 | 0.31 |
| Unrealized gains (losses) for the period | 0.60 | 0.72 | (0.56) | (0.03) | 1.28 | (1.03) |
| Total increase (decrease) from operations² | 0.74 | 0.98 | (0.49) | 0.56 | 1.92 | (0.54) |
| Distributions: | | | | | | |
| From net investment income (excluding Canadian dividends) | – | (0.09) | – | (0.14) | (0.03) | (0.14) |
| From Canadian dividends | – | (0.05) | – | (0.36) | (0.21) | (0.10) |
| From capital gains | – | (0.05) | – | (0.17) | (0.07) | (0.21) |
| Return of capital | – | – | – | – | – | – |
| Total annual distributions³ | – | (0.19) | – | (0.67) | (0.31) | (0.45) |
| Net assets, end of period | 12.72 | 11.96 | 11.13 | 11.55 | 11.66 | 10.09 |
| Series C | Sep. 30 2024 | Mar. 31 2024 | Mar. 31 2023 | Mar. 31 2022 | Mar. 31 2021 | Mar. 31 2020 |
| Net assets, beginning of period | 12.09 | 11.25 | 11.67 | 11.78 | 10.19 | 11.27 |
| Increase (decrease) from operations: | | | | | | |
| Total revenue | 0.20 | 0.37 | 0.30 | 0.53 | 0.61 | 0.45 |
| Total expenses | (0.14) | (0.26) | (0.25) | (0.27) | (0.26) | (0.26) |
| Realized gains (losses) for the period | 0.08 | 0.15 | 0.03 | 0.34 | 0.29 | 0.32 |
| Unrealized gains (losses) for the period | 0.61 | 0.73 | (0.57) | (0.03) | 1.29 | (1.04) |
| Total increase (decrease) from operations² | 0.75 | 0.99 | (0.49) | 0.57 | 1.93 | (0.53) |
| Distributions: | | | | | | |
| From net investment income (excluding Canadian dividends) | – | (0.09) | – | (0.14) | (0.03) | (0.14) |
| From Canadian dividends | – | (0.05) | – | (0.37) | (0.21) | (0.10) |
| From capital gains | – | (0.05) | – | (0.17) | (0.07) | (0.21) |
| Return of capital | – | – | – | – | – | – |
| Total annual distributions³ | – | (0.19) | – | (0.68) | (0.31) | (0.45) |
| Net assets, end of period | 12.86 | 12.09 | 11.25 | 11.67 | 11.78 | 10.19 |

(1) These calculations are prescribed by securities regulations and are not intended to be a reconciliation between opening and closing net assets per security. This information is derived from the Fund's unaudited interim financial statements and audited annual financial statements. The net assets per security presented in the financial statements may differ from the net asset value per security calculated for fund pricing purposes. An explanation of these differences, if any, can be found in the *Notes to Financial Statements*.

(2) Net assets and distributions are based on the actual number of securities outstanding at the relevant time. The increase/decrease from operations is based on the weighted average number of securities outstanding over the fiscal period.

(3) Distributions were paid in cash/reinvested in additional securities of the Fund, or both.

SYMMETRY BALANCED PORTFOLIO

INTERIM MANAGEMENT REPORT OF FUND PERFORMANCE | For the Period Ended September 30, 2024

THE FUND'S NET ASSETS PER SECURITY (\$)¹ (cont'd)

| | Sep. 30 2024 | Mar. 31 2024 | Mar. 31 2023 | Mar. 31 2022 | Mar. 31 2021 | Mar. 31 2020 |
|---|-----------------|-----------------|-----------------|-----------------|-----------------|-----------------|
| Series D | | | | | | |
| Net assets, beginning of period | 11.39 | 10.60 | 10.87 | 10.96 | 9.49 | 10.49 |
| Increase (decrease) from operations: | | | | | | |
| Total revenue | 0.19 | 0.35 | 0.28 | 0.49 | 0.57 | 0.42 |
| Total expenses | (0.07) | (0.12) | (0.11) | (0.16) | (0.15) | (0.15) |
| Realized gains (losses) for the period | 0.10 | 0.29 | 0.25 | 0.26 | 0.19 | 0.13 |
| Unrealized gains (losses) for the period | 0.58 | 0.69 | (0.54) | (0.03) | 1.20 | (0.98) |
| Total increase (decrease) from operations² | 0.80 | 1.21 | (0.12) | 0.56 | 1.81 | (0.58) |
| Distributions: | | | | | | |
| From net investment income (excluding Canadian dividends) | – | (0.15) | – | (0.15) | (0.03) | (0.17) |
| From Canadian dividends | – | (0.08) | – | (0.40) | (0.26) | (0.11) |
| From capital gains | – | (0.08) | – | (0.17) | (0.10) | (0.24) |
| Return of capital | – | – | – | – | – | – |
| Total annual distributions³ | – | (0.31) | – | (0.72) | (0.39) | (0.52) |
| Net assets, end of period | 12.18 | 11.39 | 10.60 | 10.87 | 10.96 | 9.49 |
| Series F | | | | | | |
| Net assets, beginning of period | 16.98 | 15.80 | 16.18 | 16.30 | 14.11 | 15.57 |
| Increase (decrease) from operations: | | | | | | |
| Total revenue | 0.28 | 0.52 | 0.42 | 0.73 | 0.84 | 0.62 |
| Total expenses | (0.08) | (0.15) | (0.14) | (0.16) | (0.15) | (0.15) |
| Realized gains (losses) for the period | 0.12 | 0.21 | 0.05 | (0.01) | 0.38 | 0.27 |
| Unrealized gains (losses) for the period | 0.86 | 1.03 | (0.79) | (0.04) | 1.79 | (1.45) |
| Total increase (decrease) from operations² | 1.18 | 1.61 | (0.46) | 0.52 | 2.86 | (0.71) |
| Distributions: | | | | | | |
| From net investment income (excluding Canadian dividends) | – | (0.24) | – | (0.24) | (0.06) | (0.26) |
| From Canadian dividends | – | (0.12) | – | (0.63) | (0.44) | (0.18) |
| From capital gains | – | (0.13) | – | (0.27) | (0.15) | (0.38) |
| Return of capital | – | – | – | – | – | – |
| Total annual distributions³ | – | (0.49) | – | (1.14) | (0.65) | (0.82) |
| Net assets, end of period | 18.17 | 16.98 | 15.80 | 16.18 | 16.30 | 14.11 |
| Series F5 | | | | | | |
| Net assets, beginning of period | 11.27 | 11.02 | 11.93 | 12.30 | 10.91 | 12.44 |
| Increase (decrease) from operations: | | | | | | |
| Total revenue | 0.19 | 0.36 | 0.30 | 0.55 | 0.64 | 0.48 |
| Total expenses | (0.05) | (0.10) | (0.10) | (0.12) | (0.11) | (0.12) |
| Realized gains (losses) for the period | 0.07 | 0.16 | 0.01 | (0.03) | 0.26 | 0.45 |
| Unrealized gains (losses) for the period | 0.56 | 0.70 | (0.57) | (0.03) | 1.36 | (1.13) |
| Total increase (decrease) from operations² | 0.77 | 1.12 | (0.36) | 0.37 | 2.15 | (0.32) |
| Distributions: | | | | | | |
| From net investment income (excluding Canadian dividends) | – | (0.17) | (0.01) | (0.12) | (0.02) | (0.15) |
| From Canadian dividends | – | (0.10) | (0.12) | (0.55) | (0.47) | (0.33) |
| From capital gains | – | (0.09) | – | (0.16) | (0.04) | (0.20) |
| Return of capital | (0.27) | (0.51) | (0.47) | (0.31) | (0.25) | (0.35) |
| Total annual distributions³ | (0.27) | (0.87) | (0.60) | (1.14) | (0.78) | (1.03) |
| Net assets, end of period | 11.78 | 11.27 | 11.02 | 11.93 | 12.30 | 10.91 |

| | Sep. 30 2024 | Mar. 31 2024 | Mar. 31 2023 | Mar. 31 2022 | Mar. 31 2021 | Mar. 31 2020 |
|---|-----------------|-----------------|-----------------|-----------------|-----------------|-----------------|
| Series F8 | | | | | | |
| Net assets, beginning of period | 11.75 | 11.85 | 13.28 | 14.09 | 12.88 | 15.07 |
| Increase (decrease) from operations: | | | | | | |
| Total revenue | 0.19 | 0.38 | 0.33 | 0.61 | 0.74 | 0.54 |
| Total expenses | (0.06) | (0.11) | (0.11) | (0.13) | (0.10) | (0.15) |
| Realized gains (losses) for the period | 0.09 | 0.05 | 0.06 | (0.41) | 0.31 | 1.63 |
| Unrealized gains (losses) for the period | 0.58 | 0.74 | (0.62) | (0.04) | 1.58 | (1.27) |
| Total increase (decrease) from operations² | 0.80 | 1.06 | (0.34) | 0.03 | 2.53 | 0.75 |
| Distributions: | | | | | | |
| From net investment income (excluding Canadian dividends) | – | (0.18) | (0.01) | (0.14) | (0.02) | (0.18) |
| From Canadian dividends | – | (0.10) | (0.14) | (0.63) | (0.62) | (0.40) |
| From capital gains | – | (0.09) | – | (0.17) | (0.05) | (0.24) |
| Return of capital | (0.46) | (0.91) | (0.92) | (0.78) | (0.66) | (0.84) |
| Total annual distributions³ | (0.46) | (1.28) | (1.07) | (1.72) | (1.35) | (1.66) |
| Net assets, end of period | 12.09 | 11.75 | 11.85 | 13.28 | 14.09 | 12.88 |
| Series FB | | | | | | |
| Net assets, beginning of period | 11.39 | 10.61 | 10.89 | 10.98 | 9.50 | 10.49 |
| Increase (decrease) from operations: | | | | | | |
| Total revenue | 0.19 | 0.35 | 0.28 | 0.49 | 0.57 | 0.42 |
| Total expenses | (0.07) | (0.12) | (0.12) | (0.13) | (0.12) | (0.12) |
| Realized gains (losses) for the period | 0.09 | 0.18 | 0.06 | 0.20 | 0.11 | (0.11) |
| Unrealized gains (losses) for the period | 0.58 | 0.69 | (0.53) | (0.03) | 1.21 | (0.98) |
| Total increase (decrease) from operations² | 0.79 | 1.10 | (0.31) | 0.53 | 1.77 | (0.79) |
| Distributions: | | | | | | |
| From net investment income (excluding Canadian dividends) | – | (0.15) | – | (0.16) | (0.04) | (0.17) |
| From Canadian dividends | – | (0.08) | – | (0.41) | (0.28) | (0.11) |
| From capital gains | – | (0.09) | – | (0.18) | (0.10) | (0.24) |
| Return of capital | – | – | – | – | – | – |
| Total annual distributions³ | – | (0.32) | – | (0.75) | (0.42) | (0.52) |
| Net assets, end of period | 12.18 | 11.39 | 10.61 | 10.98 | 10.98 | 9.50 |
| Series FB5 | | | | | | |
| Net assets, beginning of period | 12.07 | 11.80 | 12.80 | 13.23 | 11.76 | 13.44 |
| Increase (decrease) from operations: | | | | | | |
| Total revenue | 0.20 | 0.38 | 0.32 | 0.59 | 0.69 | 0.53 |
| Total expenses | (0.07) | (0.14) | (0.14) | (0.16) | (0.16) | (0.16) |
| Realized gains (losses) for the period | 0.10 | 0.25 | 0.26 | 1.02 | 0.37 | 0.20 |
| Unrealized gains (losses) for the period | 0.60 | 0.75 | (0.61) | (0.03) | 1.46 | (1.23) |
| Total increase (decrease) from operations² | 0.83 | 1.24 | (0.17) | 1.42 | 2.36 | (0.66) |
| Distributions: | | | | | | |
| From net investment income (excluding Canadian dividends) | – | (0.17) | – | (0.13) | (0.02) | (0.16) |
| From Canadian dividends | – | (0.09) | (0.12) | (0.55) | (0.47) | (0.31) |
| From capital gains | – | (0.09) | – | (0.17) | (0.04) | (0.21) |
| Return of capital | (0.29) | (0.55) | (0.53) | (0.37) | (0.31) | (0.42) |
| Total annual distributions³ | (0.29) | (0.90) | (0.65) | (1.22) | (0.84) | (1.10) |
| Net assets, end of period | 12.60 | 12.07 | 11.80 | 12.80 | 13.23 | 11.76 |

SYMMETRY BALANCED PORTFOLIO

INTERIM MANAGEMENT REPORT OF FUND PERFORMANCE | For the Period Ended September 30, 2024

THE FUND'S NET ASSETS PER SECURITY (\$)¹ (cont'd)

| | Sep. 30 2024 | Mar. 31 2024 | Mar. 31 2023 | Mar. 31 2022 | Mar. 31 2021 | Mar. 31 2020 |
|---|-----------------|-----------------|-----------------|-----------------|-----------------|-----------------|
| Series FR | | | | | | |
| Net assets, beginning of period | 11.71 | 10.90 | 10.00 | n/a | n/a | n/a |
| Increase (decrease) from operations: | | | | | | |
| Total revenue | 0.20 | 0.37 | 0.16 | n/a | n/a | n/a |
| Total expenses | (0.07) | (0.13) | (0.06) | n/a | n/a | n/a |
| Realized gains (losses) for the period | 0.09 | 0.51 | 0.87 | n/a | n/a | n/a |
| Unrealized gains (losses) for the period | 0.59 | 0.72 | (0.30) | n/a | n/a | n/a |
| Total increase (decrease) from operations² | 0.81 | 1.47 | 0.67 | n/a | n/a | n/a |
| Distributions: | | | | | | |
| From net investment income (excluding Canadian dividends) | – | (0.15) | – | n/a | n/a | n/a |
| From Canadian dividends | – | (0.08) | – | n/a | n/a | n/a |
| From capital gains | – | (0.08) | – | n/a | n/a | n/a |
| Return of capital | – | – | – | n/a | n/a | n/a |
| Total annual distributions³ | – | (0.31) | – | n/a | n/a | n/a |
| Net assets, end of period | 12.52 | 11.71 | 10.90 | n/a | n/a | n/a |
| Series G | | | | | | |
| Net assets, beginning of period | 14.64 | 13.62 | 14.05 | 14.17 | 12.26 | 13.55 |
| Increase (decrease) from operations: | | | | | | |
| Total revenue | 0.24 | 0.45 | 0.36 | 0.64 | 0.73 | 0.53 |
| Total expenses | (0.12) | (0.23) | (0.22) | (0.24) | (0.23) | (0.23) |
| Realized gains (losses) for the period | 0.12 | 0.22 | 0.12 | 0.36 | 0.29 | 0.44 |
| Unrealized gains (losses) for the period | 0.74 | 0.89 | (0.69) | (0.04) | 1.55 | (1.25) |
| Total increase (decrease) from operations² | 0.98 | 1.33 | (0.43) | 0.72 | 2.34 | (0.51) |
| Distributions: | | | | | | |
| From net investment income (excluding Canadian dividends) | – | (0.15) | – | (0.19) | (0.04) | (0.19) |
| From Canadian dividends | – | (0.08) | – | (0.49) | (0.31) | (0.13) |
| From capital gains | – | (0.09) | – | (0.21) | (0.11) | (0.29) |
| Return of capital | – | – | – | – | – | – |
| Total annual distributions³ | – | (0.32) | – | (0.89) | (0.46) | (0.61) |
| Net assets, end of period | 15.61 | 14.64 | 13.62 | 14.05 | 14.17 | 12.26 |
| Series I | | | | | | |
| Net assets, beginning of period | n/a | n/a | 15.32 | 15.46 | 13.38 | 14.78 |
| Increase (decrease) from operations: | | | | | | |
| Total revenue | n/a | n/a | 0.40 | 0.70 | 0.80 | 0.59 |
| Total expenses | n/a | n/a | (0.26) | (0.29) | (0.27) | (0.27) |
| Realized gains (losses) for the period | n/a | n/a | 0.06 | 0.43 | 0.35 | 0.29 |
| Unrealized gains (losses) for the period | n/a | n/a | (0.75) | (0.04) | 1.69 | (1.37) |
| Total increase (decrease) from operations² | n/a | n/a | (0.55) | 0.80 | 2.57 | (0.76) |
| Distributions: | | | | | | |
| From net investment income (excluding Canadian dividends) | n/a | n/a | – | (0.20) | (0.04) | (0.21) |
| From Canadian dividends | n/a | n/a | – | (0.52) | (0.32) | (0.14) |
| From capital gains | n/a | n/a | – | (0.23) | (0.12) | (0.30) |
| Return of capital | n/a | n/a | – | – | – | – |
| Total annual distributions³ | n/a | n/a | – | (0.95) | (0.48) | (0.65) |
| Net assets, end of period | n/a | n/a | 14.83 | 15.32 | 15.46 | 13.38 |

| | Sep. 30 2024 | Mar. 31 2024 | Mar. 31 2023 | Mar. 31 2022 | Mar. 31 2021 | Mar. 31 2020 |
|---|-----------------|-----------------|-----------------|-----------------|-----------------|-----------------|
| Series J | | | | | | |
| Net assets, beginning of period | 16.08 | 14.97 | 15.48 | 15.60 | 13.50 | 14.92 |
| Increase (decrease) from operations: | | | | | | |
| Total revenue | 0.27 | 0.49 | 0.40 | 0.70 | 0.80 | 0.59 |
| Total expenses | (0.16) | (0.29) | (0.28) | (0.31) | (0.29) | (0.29) |
| Realized gains (losses) for the period | 0.12 | 0.24 | 0.13 | (0.24) | 0.40 | 0.41 |
| Unrealized gains (losses) for the period | 0.81 | 0.98 | (0.76) | (0.04) | 1.71 | (1.38) |
| Total increase (decrease) from operations² | 1.04 | 1.42 | (0.51) | 0.11 | 2.62 | (0.67) |
| Distributions: | | | | | | |
| From net investment income (excluding Canadian dividends) | – | (0.15) | – | (0.20) | (0.04) | (0.21) |
| From Canadian dividends | – | (0.08) | – | (0.51) | (0.31) | (0.14) |
| From capital gains | – | (0.08) | – | (0.23) | (0.12) | (0.30) |
| Return of capital | – | – | – | – | – | – |
| Total annual distributions³ | – | (0.31) | – | (0.94) | (0.47) | (0.65) |
| Net assets, end of period | 17.13 | 16.08 | 14.97 | 15.48 | 15.60 | 13.50 |
| Series O | | | | | | |
| Net assets, beginning of period | 22.05 | 20.53 | 20.83 | 20.98 | 18.17 | 20.05 |
| Increase (decrease) from operations: | | | | | | |
| Total revenue | 0.37 | 0.68 | 0.54 | 0.94 | 1.09 | 0.80 |
| Total expenses | – | – | – | – | – | – |
| Realized gains (losses) for the period | 0.10 | 0.30 | (0.05) | 0.15 | 0.66 | 0.35 |
| Unrealized gains (losses) for the period | 1.12 | 1.35 | (1.03) | (0.06) | 2.31 | (1.87) |
| Total increase (decrease) from operations² | 1.59 | 2.33 | (0.54) | 1.03 | 4.06 | (0.72) |
| Distributions: | | | | | | |
| From net investment income (excluding Canadian dividends) | – | (0.41) | – | (0.36) | (0.09) | (0.39) |
| From Canadian dividends | – | (0.21) | – | (0.94) | (0.70) | (0.27) |
| From capital gains | – | (0.23) | – | (0.40) | (0.26) | (0.58) |
| Return of capital | – | – | – | – | – | – |
| Total annual distributions³ | – | (0.85) | – | (1.70) | (1.05) | (1.24) |
| Net assets, end of period | 23.72 | 22.05 | 20.53 | 20.83 | 20.98 | 18.17 |
| Series O5 | | | | | | |
| Net assets, beginning of period | 13.17 | 12.88 | 13.81 | 14.10 | 12.40 | 14.01 |
| Increase (decrease) from operations: | | | | | | |
| Total revenue | 0.22 | 0.42 | 0.35 | 0.62 | 0.74 | 0.56 |
| Total expenses | – | – | – | – | – | – |
| Realized gains (losses) for the period | 0.11 | 0.21 | (1.11) | (0.36) | 2.55 | (0.54) |
| Unrealized gains (losses) for the period | 0.66 | 0.82 | (0.66) | (0.04) | 1.56 | (1.32) |
| Total increase (decrease) from operations² | 0.99 | 1.45 | (1.42) | 0.22 | 4.85 | (1.30) |
| Distributions: | | | | | | |
| From net investment income (excluding Canadian dividends) | – | (0.27) | (0.01) | (0.15) | (0.03) | (0.18) |
| From Canadian dividends | – | (0.15) | (0.22) | (0.77) | (0.65) | (0.53) |
| From capital gains | – | (0.14) | – | (0.20) | (0.04) | (0.23) |
| Return of capital | (0.32) | (0.58) | (0.47) | (0.23) | (0.18) | (0.23) |
| Total annual distributions³ | (0.32) | (1.14) | (0.70) | (1.35) | (0.90) | (1.17) |
| Net assets, end of period | 13.83 | 13.17 | 12.88 | 13.81 | 14.10 | 12.40 |

SYMMETRY BALANCED PORTFOLIO

INTERIM MANAGEMENT REPORT OF FUND PERFORMANCE | For the Period Ended September 30, 2024

THE FUND'S NET ASSETS PER SECURITY (\$)¹ (cont'd)

| | Sep. 30 2024 | Mar. 31 2024 | Mar. 31 2023 | Mar. 31 2022 | Mar. 31 2021 | Mar. 31 2020 |
|---|-----------------|-----------------|-----------------|-----------------|-----------------|-----------------|
| Series PW | | | | | | |
| Net assets, beginning of period | 12.20 | 11.36 | 11.76 | 11.86 | 10.27 | 11.34 |
| Increase (decrease) from operations: | | | | | | |
| Total revenue | 0.20 | 0.37 | 0.30 | 0.53 | 0.61 | 0.45 |
| Total expenses | (0.13) | (0.24) | (0.23) | (0.25) | (0.24) | (0.24) |
| Realized gains (losses) for the period | 0.09 | 0.17 | 0.06 | 0.19 | 0.27 | 0.18 |
| Unrealized gains (losses) for the period | 0.62 | 0.74 | (0.57) | (0.03) | 1.30 | (1.05) |
| Total increase (decrease) from operations² | 0.78 | 1.04 | (0.44) | 0.44 | 1.94 | (0.66) |
| Distributions: | | | | | | |
| From net investment income (excluding Canadian dividends) | – | (0.11) | – | (0.15) | (0.03) | (0.15) |
| From Canadian dividends | – | (0.05) | – | (0.38) | (0.23) | (0.10) |
| From capital gains | – | (0.06) | – | (0.17) | (0.08) | (0.22) |
| Return of capital | – | – | – | – | – | – |
| Total annual distributions³ | – | (0.22) | – | (0.70) | (0.34) | (0.47) |
| Net assets, end of period | 12.99 | 12.20 | 11.36 | 11.76 | 11.86 | 10.27 |
| Series PWFB | | | | | | |
| Net assets, beginning of period | 10.94 | 10.18 | 10.42 | 10.50 | 9.09 | 10.05 |
| Increase (decrease) from operations: | | | | | | |
| Total revenue | 0.18 | 0.34 | 0.27 | 0.47 | 0.54 | 0.40 |
| Total expenses | (0.05) | (0.10) | (0.09) | (0.10) | (0.10) | (0.10) |
| Realized gains (losses) for the period | 0.09 | 0.16 | 0.03 | (0.01) | 0.25 | 0.12 |
| Unrealized gains (losses) for the period | 0.55 | 0.66 | (0.51) | (0.03) | 1.15 | (0.94) |
| Total increase (decrease) from operations² | 0.77 | 1.06 | (0.30) | 0.33 | 1.84 | (0.52) |
| Distributions: | | | | | | |
| From net investment income (excluding Canadian dividends) | – | (0.16) | – | (0.16) | (0.04) | (0.17) |
| From Canadian dividends | – | (0.08) | – | (0.41) | (0.28) | (0.12) |
| From capital gains | – | (0.08) | – | (0.17) | (0.10) | (0.25) |
| Return of capital | – | – | – | – | – | – |
| Total annual distributions³ | – | (0.32) | – | (0.74) | (0.42) | (0.54) |
| Net assets, end of period | 11.71 | 10.94 | 10.18 | 10.42 | 10.50 | 9.09 |
| Series PWFB5 | | | | | | |
| Net assets, beginning of period | 12.75 | 12.46 | 13.48 | 13.89 | 12.29 | 13.97 |
| Increase (decrease) from operations: | | | | | | |
| Total revenue | 0.21 | 0.40 | 0.33 | 0.61 | 0.72 | 0.52 |
| Total expenses | (0.05) | (0.10) | (0.12) | (0.13) | (0.10) | (0.10) |
| Realized gains (losses) for the period | 0.09 | 0.21 | (3.18) | (0.43) | 0.30 | 0.43 |
| Unrealized gains (losses) for the period | 0.64 | 0.80 | (0.63) | (0.04) | 1.53 | (1.22) |
| Total increase (decrease) from operations² | 0.89 | 1.31 | (3.60) | 0.01 | 2.45 | (0.37) |
| Distributions: | | | | | | |
| From net investment income (excluding Canadian dividends) | – | (0.20) | (0.01) | (0.14) | (0.02) | (0.16) |
| From Canadian dividends | – | (0.11) | (0.14) | (0.62) | (0.55) | (0.43) |
| From capital gains | – | (0.10) | – | (0.18) | (0.04) | (0.23) |
| Return of capital | (0.31) | (0.59) | (0.53) | (0.35) | (0.27) | (0.33) |
| Total annual distributions³ | (0.31) | (1.00) | (0.68) | (1.29) | (0.88) | (1.15) |
| Net assets, end of period | 13.33 | 12.75 | 12.46 | 13.48 | 13.89 | 12.29 |

| | Sep. 30 2024 | Mar. 31 2024 | Mar. 31 2023 | Mar. 31 2022 | Mar. 31 2021 | Mar. 31 2020 |
|---|-----------------|-----------------|-----------------|-----------------|-----------------|-----------------|
| Series PWR | | | | | | |
| Net assets, beginning of period | 10.74 | 10.00 | 10.35 | 10.44 | 9.03 | 10.00 |
| Increase (decrease) from operations: | | | | | | |
| Total revenue | 0.18 | 0.33 | 0.27 | 0.47 | 0.54 | 0.40 |
| Total expenses | (0.11) | (0.21) | (0.20) | (0.22) | (0.21) | (0.21) |
| Realized gains (losses) for the period | 0.11 | 0.23 | 0.19 | 0.13 | 0.09 | (0.24) |
| Unrealized gains (losses) for the period | 0.54 | 0.65 | (0.51) | (0.03) | 1.15 | (0.94) |
| Total increase (decrease) from operations² | 0.72 | 1.00 | (0.25) | 0.35 | 1.57 | (0.99) |
| Distributions: | | | | | | |
| From net investment income (excluding Canadian dividends) | – | (0.10) | – | (0.13) | (0.03) | (0.13) |
| From Canadian dividends | – | (0.05) | – | (0.34) | (0.20) | (0.09) |
| From capital gains | – | (0.05) | – | (0.15) | (0.07) | (0.19) |
| Return of capital | – | – | – | – | – | – |
| Total annual distributions³ | – | (0.20) | – | (0.62) | (0.30) | (0.41) |
| Net assets, end of period | 11.44 | 10.74 | 10.00 | 10.35 | 10.44 | 9.03 |
| Series PWT5 | | | | | | |
| Net assets, beginning of period | 11.63 | 11.37 | 12.45 | 12.96 | 11.62 | 13.37 |
| Increase (decrease) from operations: | | | | | | |
| Total revenue | 0.19 | 0.37 | 0.31 | 0.57 | 0.68 | 0.52 |
| Total expenses | (0.12) | (0.23) | (0.23) | (0.27) | (0.26) | (0.27) |
| Realized gains (losses) for the period | 0.09 | 0.13 | 0.01 | (0.26) | 0.42 | (0.09) |
| Unrealized gains (losses) for the period | 0.58 | 0.72 | (0.59) | (0.03) | 1.44 | (1.22) |
| Total increase (decrease) from operations² | 0.74 | 0.99 | (0.50) | 0.01 | 2.28 | (1.06) |
| Distributions: | | | | | | |
| From net investment income (excluding Canadian dividends) | – | (0.11) | – | (0.12) | (0.02) | (0.15) |
| From Canadian dividends | – | (0.06) | (0.06) | (0.44) | (0.36) | (0.21) |
| From capital gains | – | (0.06) | – | (0.16) | (0.04) | (0.21) |
| Return of capital | (0.28) | (0.54) | (0.57) | (0.45) | (0.40) | (0.51) |
| Total annual distributions³ | (0.28) | (0.77) | (0.63) | (1.17) | (0.82) | (1.08) |
| Net assets, end of period | 12.08 | 11.63 | 11.37 | 12.45 | 12.96 | 11.62 |
| Series PWT8 | | | | | | |
| Net assets, beginning of period | 9.59 | 9.67 | 10.96 | 11.76 | 10.88 | 12.91 |
| Increase (decrease) from operations: | | | | | | |
| Total revenue | 0.16 | 0.31 | 0.27 | 0.51 | 0.62 | 0.50 |
| Total expenses | (0.10) | (0.19) | (0.20) | (0.24) | (0.24) | (0.26) |
| Realized gains (losses) for the period | 0.06 | 0.11 | (0.02) | (0.30) | 0.28 | 0.38 |
| Unrealized gains (losses) for the period | 0.48 | 0.61 | (0.51) | (0.03) | 1.32 | (1.16) |
| Total increase (decrease) from operations² | 0.60 | 0.84 | (0.46) | (0.06) | 1.98 | (0.54) |
| Distributions: | | | | | | |
| From net investment income (excluding Canadian dividends) | – | (0.09) | – | (0.11) | (0.02) | (0.13) |
| From Canadian dividends | – | (0.05) | (0.05) | (0.40) | (0.33) | (0.21) |
| From capital gains | – | (0.05) | – | (0.14) | (0.04) | (0.20) |
| Return of capital | (0.38) | (0.75) | (0.84) | (0.76) | (0.74) | (0.87) |
| Total annual distributions³ | (0.38) | (0.94) | (0.89) | (1.41) | (1.13) | (1.41) |
| Net assets, end of period | 9.81 | 9.59 | 9.67 | 10.96 | 11.76 | 10.88 |

SYMMETRY BALANCED PORTFOLIO

INTERIM MANAGEMENT REPORT OF FUND PERFORMANCE | For the Period Ended September 30, 2024

THE FUND'S NET ASSETS PER SECURITY (\$)¹ (cont'd)

| | Sep. 30 2024 | Mar. 31 2024 | Mar. 31 2023 | Mar. 31 2022 | Mar. 31 2021 | Mar. 31 2020 |
|---|-----------------|-----------------|-----------------|-----------------|-----------------|-----------------|
| Series PWX | | | | | | |
| Net assets, beginning of period | 12.79 | 11.91 | 12.08 | 12.16 | 10.53 | 11.62 |
| Increase (decrease) from operations: | | | | | | |
| Total revenue | 0.21 | 0.39 | 0.32 | 0.55 | 0.63 | 0.46 |
| Total expenses | - | - | - | - | - | - |
| Realized gains (losses) for the period | 0.09 | 0.21 | 0.03 | 0.12 | 0.31 | 0.31 |
| Unrealized gains (losses) for the period | 0.65 | 0.78 | (0.60) | (0.03) | 1.34 | (1.08) |
| Total increase (decrease) from operations² | 0.95 | 1.38 | (0.25) | 0.64 | 2.28 | (0.31) |
| Distributions: | | | | | | |
| From net investment income (excluding Canadian dividends) | - | (0.24) | - | (0.21) | (0.05) | (0.22) |
| From Canadian dividends | - | (0.12) | - | (0.54) | (0.41) | (0.16) |
| From capital gains | - | (0.13) | - | (0.22) | (0.15) | (0.34) |
| Return of capital | - | - | - | - | - | - |
| Total annual distributions³ | - | (0.49) | - | (0.97) | (0.61) | (0.72) |
| Net assets, end of period | 13.76 | 12.79 | 11.91 | 12.08 | 12.16 | 10.53 |
| Series PWX8 | | | | | | |
| Net assets, beginning of period | 12.11 | 12.21 | 13.55 | 14.31 | 12.99 | 15.11 |
| Increase (decrease) from operations: | | | | | | |
| Total revenue | 0.20 | 0.38 | 0.34 | 0.63 | 0.75 | 0.59 |
| Total expenses | - | - | - | - | - | - |
| Realized gains (losses) for the period | 0.09 | 2.14 | 0.11 | 0.37 | 0.31 | 0.24 |
| Unrealized gains (losses) for the period | 0.60 | 0.75 | (0.64) | (0.04) | 1.60 | (1.37) |
| Total increase (decrease) from operations² | 0.89 | 3.27 | (0.19) | 0.96 | 2.66 | (0.54) |
| Distributions: | | | | | | |
| From net investment income (excluding Canadian dividends) | - | (0.25) | (0.01) | (0.15) | (0.03) | (0.19) |
| From Canadian dividends | - | (0.14) | (0.21) | (0.75) | (0.67) | (0.64) |
| From capital gains | - | (0.13) | - | (0.19) | (0.05) | (0.24) |
| Return of capital | (0.47) | (0.91) | (0.87) | (0.68) | (0.62) | (0.61) |
| Total annual distributions³ | (0.47) | (1.43) | (1.09) | (1.77) | (1.37) | (1.68) |
| Net assets, end of period | 12.53 | 12.11 | 12.21 | 13.55 | 14.31 | 12.99 |
| Series S | | | | | | |
| Net assets, beginning of period | 12.68 | 11.84 | 12.26 | 12.34 | 10.72 | 11.97 |
| Increase (decrease) from operations: | | | | | | |
| Total revenue | 0.21 | 0.39 | 0.32 | 0.56 | 0.64 | 0.47 |
| Total expenses | - | - | - | - | - | - |
| Realized gains (losses) for the period | 0.11 | 0.18 | 0.12 | 0.32 | 0.25 | 0.25 |
| Unrealized gains (losses) for the period | 0.64 | 0.77 | (0.60) | (0.03) | 1.35 | (1.10) |
| Total increase (decrease) from operations² | 0.96 | 1.34 | (0.16) | 0.85 | 2.24 | (0.38) |
| Distributions: | | | | | | |
| From net investment income (excluding Canadian dividends) | - | (0.25) | (0.01) | (0.13) | (0.02) | (0.15) |
| From Canadian dividends | - | (0.14) | (0.22) | (0.66) | (0.57) | (0.51) |
| From capital gains | - | (0.13) | - | (0.17) | (0.04) | (0.20) |
| Return of capital | - | - | - | - | - | - |
| Total annual distributions³ | - | (0.52) | (0.23) | (0.96) | (0.63) | (0.86) |
| Net assets, end of period | 13.63 | 12.68 | 11.84 | 12.26 | 12.34 | 10.72 |

| | Sep. 30 2024 | Mar. 31 2024 | Mar. 31 2023 | Mar. 31 2022 | Mar. 31 2021 | Mar. 31 2020 |
|---|-----------------|-----------------|-----------------|-----------------|-----------------|-----------------|
| Series T5 | | | | | | |
| Net assets, beginning of period | 10.58 | 10.35 | 11.36 | 11.85 | 10.64 | 12.25 |
| Increase (decrease) from operations: | | | | | | |
| Total revenue | 0.17 | 0.33 | 0.28 | 0.52 | 0.62 | 0.47 |
| Total expenses | (0.12) | (0.23) | (0.24) | (0.27) | (0.27) | (0.28) |
| Realized gains (losses) for the period | 0.07 | 0.07 | (0.15) | (0.20) | 0.32 | 0.32 |
| Unrealized gains (losses) for the period | 0.53 | 0.66 | (0.54) | (0.03) | 1.32 | (1.11) |
| Total increase (decrease) from operations² | 0.65 | 0.83 | (0.65) | 0.02 | 1.99 | (0.60) |
| Distributions: | | | | | | |
| From net investment income (excluding Canadian dividends) | - | (0.09) | - | (0.11) | (0.02) | (0.12) |
| From Canadian dividends | - | (0.05) | (0.04) | (0.38) | (0.30) | (0.17) |
| From capital gains | - | (0.05) | - | (0.14) | (0.04) | (0.17) |
| Return of capital | (0.26) | (0.49) | (0.53) | (0.43) | (0.39) | (0.49) |
| Total annual distributions³ | (0.26) | (0.68) | (0.57) | (1.06) | (0.75) | (0.95) |
| Net assets, end of period | 10.98 | 10.58 | 10.35 | 11.36 | 11.85 | 10.64 |
| Series T8 | | | | | | |
| Net assets, beginning of period | 7.63 | 7.69 | 8.74 | 9.40 | 8.72 | 10.38 |
| Increase (decrease) from operations: | | | | | | |
| Total revenue | 0.12 | 0.24 | 0.22 | 0.41 | 0.50 | 0.40 |
| Total expenses | (0.09) | (0.17) | (0.18) | (0.21) | (0.21) | (0.23) |
| Realized gains (losses) for the period | 0.02 | 0.07 | 0.01 | (0.15) | 0.38 | 0.38 |
| Unrealized gains (losses) for the period | 0.38 | 0.48 | (0.41) | (0.02) | 1.06 | (0.93) |
| Total increase (decrease) from operations² | 0.43 | 0.62 | (0.36) | 0.03 | 1.73 | (0.38) |
| Distributions: | | | | | | |
| From net investment income (excluding Canadian dividends) | - | (0.06) | - | (0.08) | (0.01) | (0.11) |
| From Canadian dividends | - | (0.04) | (0.03) | (0.30) | (0.25) | (0.15) |
| From capital gains | - | (0.03) | - | (0.12) | (0.03) | (0.16) |
| Return of capital | (0.30) | (0.60) | (0.68) | (0.62) | (0.61) | (0.71) |
| Total annual distributions³ | (0.30) | (0.73) | (0.71) | (1.12) | (0.90) | (1.13) |
| Net assets, end of period | 7.80 | 7.63 | 7.69 | 8.74 | 9.40 | 8.72 |
| Series LB | | | | | | |
| Net assets, beginning of period | 12.74 | 11.85 | 12.31 | 12.42 | 10.75 | 11.88 |
| Increase (decrease) from operations: | | | | | | |
| Total revenue | 0.21 | 0.39 | 0.32 | 0.56 | 0.64 | 0.47 |
| Total expenses | (0.15) | (0.28) | (0.27) | (0.30) | (0.28) | (0.29) |
| Realized gains (losses) for the period | 0.09 | 0.15 | 0.04 | 0.34 | 0.29 | 0.28 |
| Unrealized gains (losses) for the period | 0.64 | 0.77 | (0.60) | (0.03) | 1.36 | (1.10) |
| Total increase (decrease) from operations² | 0.79 | 1.03 | (0.51) | 0.57 | 2.01 | (0.64) |
| Distributions: | | | | | | |
| From net investment income (excluding Canadian dividends) | - | (0.09) | - | (0.15) | (0.03) | (0.14) |
| From Canadian dividends | - | (0.05) | - | (0.38) | (0.21) | (0.10) |
| From capital gains | - | (0.05) | - | (0.17) | (0.08) | (0.22) |
| Return of capital | - | - | - | - | - | - |
| Total annual distributions³ | - | (0.19) | - | (0.70) | (0.32) | (0.46) |
| Net assets, end of period | 13.54 | 12.74 | 11.85 | 12.31 | 12.42 | 10.75 |

SYMMETRY BALANCED PORTFOLIO

INTERIM MANAGEMENT REPORT OF FUND PERFORMANCE | For the Period Ended September 30, 2024

THE FUND'S NET ASSETS PER SECURITY (\$)¹ (cont'd)

| | Sep. 30 2024 | Mar. 31 2024 | Mar. 31 2023 | Mar. 31 2022 | Mar. 31 2021 | Mar. 31 2020 |
|---|-----------------|-----------------|-----------------|-----------------|-----------------|-----------------|
| Series LF | | | | | | |
| Net assets, beginning of period | 11.28 | 10.50 | 10.75 | 10.83 | 9.38 | 10.34 |
| Increase (decrease) from operations: | | | | | | |
| Total revenue | 0.19 | 0.35 | 0.28 | 0.49 | 0.56 | 0.42 |
| Total expenses | (0.06) | (0.10) | (0.10) | (0.11) | (0.10) | (0.10) |
| Realized gains (losses) for the period | 0.10 | 0.12 | 0.01 | – | 0.22 | (0.25) |
| Unrealized gains (losses) for the period | 0.57 | 0.68 | (0.53) | (0.03) | 1.19 | (0.98) |
| Total increase (decrease) from operations² | 0.80 | 1.05 | (0.34) | 0.35 | 1.87 | (0.91) |
| Distributions: | | | | | | |
| From net investment income (excluding Canadian dividends) | – | (0.15) | – | (0.16) | (0.04) | (0.16) |
| From Canadian dividends | – | (0.08) | – | (0.42) | (0.29) | (0.12) |
| From capital gains | – | (0.09) | – | (0.17) | (0.10) | (0.25) |
| Return of capital | – | – | – | – | – | – |
| Total annual distributions³ | – | (0.32) | – | (0.75) | (0.43) | (0.53) |
| Net assets, end of period | 12.07 | 11.28 | 10.50 | 10.75 | 10.83 | 9.38 |
| Series LF5 | | | | | | |
| Net assets, beginning of period | 13.91 | 13.60 | 14.73 | 15.18 | 13.47 | 15.33 |
| Increase (decrease) from operations: | | | | | | |
| Total revenue | 0.23 | 0.44 | 0.37 | 0.67 | 0.79 | 0.62 |
| Total expenses | (0.07) | (0.13) | (0.13) | (0.15) | (0.15) | (0.15) |
| Realized gains (losses) for the period | 0.10 | 0.16 | (0.24) | (0.36) | 0.30 | (0.51) |
| Unrealized gains (losses) for the period | 0.70 | 0.87 | (0.70) | (0.04) | 1.68 | (1.44) |
| Total increase (decrease) from operations² | 0.96 | 1.34 | (0.70) | 0.12 | 2.62 | (1.48) |
| Distributions: | | | | | | |
| From net investment income (excluding Canadian dividends) | – | (0.21) | (0.01) | (0.15) | (0.02) | (0.17) |
| From Canadian dividends | – | (0.12) | (0.15) | (0.67) | (0.57) | (0.39) |
| From capital gains | – | (0.11) | – | (0.20) | (0.05) | (0.24) |
| Return of capital | (0.34) | (0.63) | (0.58) | (0.39) | (0.32) | (0.44) |
| Total annual distributions³ | (0.34) | (1.07) | (0.74) | (1.41) | (0.96) | (1.24) |
| Net assets, end of period | 14.53 | 13.91 | 13.60 | 14.73 | 15.18 | 13.47 |
| Series LM | | | | | | |
| Net assets, beginning of period | 7.09 | 6.93 | 7.61 | 7.95 | 7.14 | 8.25 |
| Increase (decrease) from operations: | | | | | | |
| Total revenue | 0.12 | 0.22 | 0.19 | 0.35 | 0.42 | 0.32 |
| Total expenses | (0.08) | (0.16) | (0.16) | (0.19) | (0.18) | (0.19) |
| Realized gains (losses) for the period | 0.04 | 0.08 | – | 0.24 | 0.23 | 0.27 |
| Unrealized gains (losses) for the period | 0.35 | 0.44 | (0.36) | (0.02) | 0.88 | (0.74) |
| Total increase (decrease) from operations² | 0.43 | 0.58 | (0.33) | 0.38 | 1.35 | (0.34) |
| Distributions: | | | | | | |
| From net investment income (excluding Canadian dividends) | – | (0.06) | – | (0.07) | (0.01) | (0.09) |
| From Canadian dividends | – | (0.03) | (0.02) | (0.25) | (0.20) | (0.11) |
| From capital gains | – | (0.03) | – | (0.10) | (0.02) | (0.13) |
| Return of capital | (0.17) | (0.33) | (0.36) | (0.29) | (0.27) | (0.34) |
| Total annual distributions³ | (0.17) | (0.45) | (0.38) | (0.71) | (0.50) | (0.67) |
| Net assets, end of period | 7.35 | 7.09 | 6.93 | 7.61 | 7.95 | 7.14 |

| | Sep. 30 2024 | Mar. 31 2024 | Mar. 31 2023 | Mar. 31 2022 | Mar. 31 2021 | Mar. 31 2020 |
|---|-----------------|-----------------|-----------------|-----------------|-----------------|-----------------|
| Series LW | | | | | | |
| Net assets, beginning of period | 10.46 | 9.73 | 10.09 | 10.17 | 8.80 | 9.73 |
| Increase (decrease) from operations: | | | | | | |
| Total revenue | 0.17 | 0.32 | 0.26 | 0.46 | 0.52 | 0.39 |
| Total expenses | (0.11) | (0.21) | (0.20) | (0.22) | (0.21) | (0.21) |
| Realized gains (losses) for the period | 0.08 | 0.11 | 0.04 | 0.17 | 0.21 | 0.17 |
| Unrealized gains (losses) for the period | 0.53 | 0.63 | (0.49) | (0.03) | 1.11 | (0.90) |
| Total increase (decrease) from operations² | 0.67 | 0.85 | (0.39) | 0.38 | 1.63 | (0.55) |
| Distributions: | | | | | | |
| From net investment income (excluding Canadian dividends) | – | (0.09) | – | (0.13) | (0.03) | (0.12) |
| From Canadian dividends | – | (0.04) | – | (0.32) | (0.19) | (0.09) |
| From capital gains | – | (0.05) | – | (0.14) | (0.06) | (0.19) |
| Return of capital | – | – | – | – | – | – |
| Total annual distributions³ | – | (0.18) | – | (0.59) | (0.28) | (0.40) |
| Net assets, end of period | 11.13 | 10.46 | 9.73 | 10.09 | 10.17 | 8.80 |
| Series LW5 | | | | | | |
| Net assets, beginning of period | 11.74 | 11.48 | 12.59 | 13.11 | 11.76 | 13.56 |
| Increase (decrease) from operations: | | | | | | |
| Total revenue | 0.19 | 0.37 | 0.32 | 0.58 | 0.69 | 0.53 |
| Total expenses | (0.13) | (0.24) | (0.24) | (0.28) | (0.28) | (0.29) |
| Realized gains (losses) for the period | 0.08 | 0.09 | (0.01) | 0.19 | 0.31 | 0.39 |
| Unrealized gains (losses) for the period | 0.59 | 0.73 | (0.60) | (0.03) | 1.46 | (1.22) |
| Total increase (decrease) from operations² | 0.73 | 0.95 | (0.53) | 0.46 | 2.18 | (0.59) |
| Distributions: | | | | | | |
| From net investment income (excluding Canadian dividends) | – | (0.11) | – | (0.12) | (0.02) | (0.15) |
| From Canadian dividends | – | (0.06) | (0.05) | (0.44) | (0.35) | (0.21) |
| From capital gains | – | (0.05) | – | (0.16) | (0.05) | (0.21) |
| Return of capital | (0.29) | (0.55) | (0.59) | (0.46) | (0.41) | (0.53) |
| Total annual distributions³ | (0.29) | (0.77) | (0.64) | (1.18) | (0.83) | (1.10) |
| Net assets, end of period | 12.20 | 11.74 | 11.48 | 12.59 | 13.11 | 11.76 |
| Series LX | | | | | | |
| Net assets, beginning of period | 10.30 | 10.07 | 11.06 | 11.55 | 10.38 | 11.99 |
| Increase (decrease) from operations: | | | | | | |
| Total revenue | 0.17 | 0.32 | 0.28 | 0.51 | 0.61 | 0.47 |
| Total expenses | (0.12) | (0.23) | (0.24) | (0.28) | (0.27) | (0.28) |
| Realized gains (losses) for the period | 0.06 | 0.11 | 0.07 | 0.26 | 0.30 | 0.24 |
| Unrealized gains (losses) for the period | 0.51 | 0.64 | (0.52) | (0.03) | 1.29 | (1.09) |
| Total increase (decrease) from operations² | 0.62 | 0.84 | (0.41) | 0.46 | 1.93 | (0.66) |
| Distributions: | | | | | | |
| From net investment income (excluding Canadian dividends) | – | (0.08) | – | (0.10) | (0.02) | (0.12) |
| From Canadian dividends | – | (0.04) | (0.04) | (0.37) | (0.29) | (0.17) |
| From capital gains | – | (0.04) | – | (0.14) | (0.03) | (0.18) |
| Return of capital | (0.25) | (0.49) | (0.52) | (0.42) | (0.39) | (0.49) |
| Total annual distributions³ | (0.25) | (0.65) | (0.56) | (1.03) | (0.73) | (0.96) |
| Net assets, end of period | 10.68 | 10.30 | 10.07 | 11.06 | 11.55 | 10.38 |

SYMMETRY BALANCED PORTFOLIO

INTERIM MANAGEMENT REPORT OF FUND PERFORMANCE | For the Period Ended September 30, 2024

RATIOS AND SUPPLEMENTAL DATA

| | Sep. 30 2024 | Mar. 31 2024 | Mar. 31 2023 | Mar. 31 2022 | Mar. 31 2021 | Mar. 31 2020 |
|--|-----------------|-----------------|-----------------|-----------------|-----------------|-----------------|
| Series A | | | | | | |
| Total net asset value (\$000) ¹ | 321,637 | 330,779 | 345,125 | 407,914 | 412,662 | 405,841 |
| Securities outstanding (000) ¹ | 18,573 | 20,305 | 22,775 | 25,936 | 26,003 | 29,551 |
| Management expense ratio (%) ² | 2.29 | 2.29 | 2.29 | 2.29 | 2.30 | 2.28 |
| Management expense ratio before waivers or absorptions (%) ² | 2.31 | 2.31 | 2.30 | 2.31 | 2.31 | 2.28 |
| Trading expense ratio (%) ³ | 0.05 | 0.05 | 0.05 | 0.07 | 0.11 | 0.11 |
| Portfolio turnover rate (%) ⁴ | 7.81 | 13.83 | 28.21 | 10.95 | 36.04 | 33.68 |
| Net asset value per security (\$) | 17.32 | 16.29 | 15.15 | 15.73 | 15.87 | 13.73 |
| Series AR | | | | | | |
| Total net asset value (\$000) ¹ | 153,136 | 151,019 | 137,255 | 137,308 | 130,982 | 104,602 |
| Securities outstanding (000) ¹ | 10,767 | 11,288 | 11,028 | 10,632 | 10,052 | 9,277 |
| Management expense ratio (%) ² | 2.26 | 2.27 | 2.26 | 2.27 | 2.28 | 2.26 |
| Management expense ratio before waivers or absorptions (%) ² | 2.29 | 2.29 | 2.28 | 2.29 | 2.29 | 2.27 |
| Trading expense ratio (%) ³ | 0.05 | 0.05 | 0.05 | 0.07 | 0.11 | 0.11 |
| Portfolio turnover rate (%) ⁴ | 7.81 | 13.83 | 28.21 | 10.95 | 36.04 | 33.68 |
| Net asset value per security (\$) | 14.22 | 13.38 | 12.45 | 12.91 | 13.03 | 11.28 |
| Series B | | | | | | |
| Total net asset value (\$000) ¹ | 5,220 | 5,242 | 5,528 | 6,659 | 7,234 | 6,968 |
| Securities outstanding (000) ¹ | 411 | 438 | 497 | 577 | 621 | 691 |
| Management expense ratio (%) ² | 2.28 | 2.28 | 2.28 | 2.29 | 2.29 | 2.27 |
| Management expense ratio before waivers or absorptions (%) ² | 2.30 | 2.30 | 2.29 | 2.30 | 2.31 | 2.28 |
| Trading expense ratio (%) ³ | 0.05 | 0.05 | 0.05 | 0.07 | 0.11 | 0.11 |
| Portfolio turnover rate (%) ⁴ | 7.81 | 13.83 | 28.21 | 10.95 | 36.04 | 33.68 |
| Net asset value per security (\$) | 12.72 | 11.96 | 11.13 | 11.55 | 11.66 | 10.09 |
| Series C | | | | | | |
| Total net asset value (\$000) ¹ | 6,900 | 6,953 | 7,635 | 9,259 | 9,877 | 9,604 |
| Securities outstanding (000) ¹ | 537 | 575 | 679 | 793 | 838 | 942 |
| Management expense ratio (%) ² | 2.25 | 2.26 | 2.26 | 2.26 | 2.27 | 2.25 |
| Management expense ratio before waivers or absorptions (%) ² | 2.28 | 2.28 | 2.27 | 2.28 | 2.28 | 2.25 |
| Trading expense ratio (%) ³ | 0.05 | 0.05 | 0.05 | 0.07 | 0.11 | 0.11 |
| Portfolio turnover rate (%) ⁴ | 7.81 | 13.83 | 28.21 | 10.95 | 36.04 | 33.68 |
| Net asset value per security (\$) | 12.86 | 12.09 | 11.25 | 11.67 | 11.78 | 10.19 |
| Series D | | | | | | |
| Total net asset value (\$000) ¹ | 3,971 | 3,528 | 2,776 | 756 | 619 | 448 |
| Securities outstanding (000) ¹ | 326 | 310 | 262 | 70 | 56 | 47 |
| Management expense ratio (%) ² | 1.13 | 1.13 | 1.12 | 1.39 | 1.40 | 1.36 |
| Management expense ratio before waivers or absorptions (%) ² | 1.15 | 1.15 | 1.14 | 1.41 | 1.41 | 1.37 |
| Trading expense ratio (%) ³ | 0.05 | 0.05 | 0.05 | 0.07 | 0.11 | 0.11 |
| Portfolio turnover rate (%) ⁴ | 7.81 | 13.83 | 28.21 | 10.95 | 36.04 | 33.68 |
| Net asset value per security (\$) | 12.18 | 11.39 | 10.60 | 10.87 | 10.96 | 9.49 |

| | Sep. 30 2024 | Mar. 31 2024 | Mar. 31 2023 | Mar. 31 2022 | Mar. 31 2021 | Mar. 31 2020 |
|--|-----------------|-----------------|-----------------|-----------------|-----------------|-----------------|
| Series F | | | | | | |
| Total net asset value (\$000) ¹ | 136,264 | 133,848 | 133,296 | 148,995 | 62,321 | 56,314 |
| Securities outstanding (000) ¹ | 7,499 | 7,884 | 8,436 | 9,207 | 3,824 | 3,992 |
| Management expense ratio (%) ² | 0.95 | 0.95 | 0.95 | 0.96 | 0.97 | 0.95 |
| Management expense ratio before waivers or absorptions (%) ² | 0.97 | 0.97 | 0.97 | 0.97 | 0.98 | 0.95 |
| Trading expense ratio (%) ³ | 0.05 | 0.05 | 0.05 | 0.07 | 0.11 | 0.11 |
| Portfolio turnover rate (%) ⁴ | 7.81 | 13.83 | 28.21 | 10.95 | 36.04 | 33.68 |
| Net asset value per security (\$) | 18.17 | 16.98 | 15.80 | 16.18 | 16.30 | 14.11 |
| Series F5 | | | | | | |
| Total net asset value (\$000) ¹ | 4,942 | 4,895 | 4,827 | 5,605 | 2,427 | 2,032 |
| Securities outstanding (000) ¹ | 420 | 434 | 438 | 470 | 197 | 186 |
| Management expense ratio (%) ² | 0.92 | 0.93 | 0.93 | 0.94 | 0.96 | 0.95 |
| Management expense ratio before waivers or absorptions (%) ² | 0.95 | 0.95 | 0.95 | 0.95 | 0.97 | 0.95 |
| Trading expense ratio (%) ³ | 0.05 | 0.05 | 0.05 | 0.07 | 0.11 | 0.11 |
| Portfolio turnover rate (%) ⁴ | 7.81 | 13.83 | 28.21 | 10.95 | 36.04 | 33.68 |
| Net asset value per security (\$) | 11.78 | 11.27 | 11.02 | 11.93 | 12.30 | 10.91 |
| Series F8 | | | | | | |
| Total net asset value (\$000) ¹ | 8,294 | 8,375 | 10,580 | 12,291 | 1 | 1 |
| Securities outstanding (000) ¹ | 686 | 713 | 893 | 926 | - | - |
| Management expense ratio (%) ² | 0.94 | 0.94 | 0.94 | 0.95 | 1.00 | 0.96 |
| Management expense ratio before waivers or absorptions (%) ² | 0.97 | 0.96 | 0.95 | 0.96 | 1.01 | 0.97 |
| Trading expense ratio (%) ³ | 0.05 | 0.05 | 0.05 | 0.07 | 0.11 | 0.11 |
| Portfolio turnover rate (%) ⁴ | 7.81 | 13.83 | 28.21 | 10.95 | 36.04 | 33.68 |
| Net asset value per security (\$) | 12.09 | 11.75 | 11.85 | 13.28 | 14.09 | 12.88 |

(1) This information is provided as at the end of the fiscal period shown.

(2) Management expense ratio ("MER") is based on total expenses, excluding commissions and other portfolio transaction costs, income taxes and withholding taxes, for the stated period and is expressed as an annualized percentage of daily average net assets during the period, except as noted. In the period a series is established, the MER is annualized from the date of inception to the end of the period. Where the Fund directly invests in securities of another fund (including exchange-traded funds or "ETFs"), the MERs presented for the Fund include the portion of MERs of the other fund(s) attributable to this investment. Any income distributions received from ETFs managed by the Manager, with the intention of offsetting fees paid within those ETFs but which are not considered to be duplicative fees under regulatory requirements, are treated as waived expenses for MER purposes. The Manager may waive or absorb operating expenses at its discretion and stop waiving or absorbing such expenses at any time without notice.

(3) The trading expense ratio ("TER") represents total commissions and other portfolio transaction costs incurred as an annualized percentage of daily average net assets during the period. Where the Fund invests in securities of another fund (including ETFs), the TERs presented for the Fund include the portion of TERs of the other fund(s) attributable to this investment.

(4) The Fund's portfolio turnover rate indicates how actively the Fund's portfolio advisor manages its portfolio investments. A portfolio turnover rate of 100% is equivalent to the Fund buying and selling all of the securities in its portfolio once in the course of the period. The higher the Fund's portfolio turnover rate in a period, the greater the trading costs payable by the Fund in the period, and the greater the chance of an investor receiving taxable capital gains in the year. There is not necessarily a relationship between a high turnover rate and the performance of a fund. The portfolio turnover rate is not provided when the Fund is less than one year old. The value of any trades to realign the Fund's portfolio after a fund merger, if any, is excluded from the portfolio turnover rate.

SYMMETRY BALANCED PORTFOLIO

INTERIM MANAGEMENT REPORT OF FUND PERFORMANCE | For the Period Ended September 30, 2024

RATIOS AND SUPPLEMENTAL DATA (cont'd)

| | Sep. 30 2024 | Mar. 31 2024 | Mar. 31 2023 | Mar. 31 2022 | Mar. 31 2021 | Mar. 31 2020 |
|--|-----------------|-----------------|-----------------|-----------------|-----------------|-----------------|
| Series FB | | | | | | |
| Total net asset value (\$000) ¹ | 1,956 | 1,891 | 1,710 | 1,951 | 1,437 | 848 |
| Securities outstanding (000) ¹ | 161 | 166 | 161 | 179 | 131 | 89 |
| Management expense ratio (%) ² | 1.15 | 1.16 | 1.15 | 1.16 | 1.18 | 1.15 |
| Management expense ratio before waivers or absorptions (%) ² | 1.18 | 1.18 | 1.17 | 1.18 | 1.19 | 1.16 |
| Trading expense ratio (%) ³ | 0.05 | 0.05 | 0.05 | 0.07 | 0.11 | 0.11 |
| Portfolio turnover rate (%) ⁴ | 7.81 | 13.83 | 28.21 | 10.95 | 36.04 | 33.68 |
| Net asset value per security (\$) | 12.18 | 11.39 | 10.61 | 10.89 | 10.98 | 9.50 |
| Series FB5 | | | | | | |
| Total net asset value (\$000) ¹ | 7 | 6 | 5 | 4 | 10 | 12 |
| Securities outstanding (000) ¹ | 1 | 1 | - | - | 1 | 1 |
| Management expense ratio (%) ² | 1.20 | 1.20 | 1.20 | 1.20 | 1.23 | 1.22 |
| Management expense ratio before waivers or absorptions (%) ² | 1.22 | 1.22 | 1.21 | 1.21 | 1.24 | 1.23 |
| Trading expense ratio (%) ³ | 0.05 | 0.05 | 0.05 | 0.07 | 0.11 | 0.11 |
| Portfolio turnover rate (%) ⁴ | 7.81 | 13.83 | 28.21 | 10.95 | 36.04 | 33.68 |
| Net asset value per security (\$) | 12.60 | 12.07 | 11.80 | 12.80 | 13.23 | 11.76 |
| Series FR | | | | | | |
| Total net asset value (\$000) ¹ | 34,124 | 31,398 | 3,693 | n/a | n/a | n/a |
| Securities outstanding (000) ¹ | 2,726 | 2,681 | 339 | n/a | n/a | n/a |
| Management expense ratio (%) ² | 1.19 | 1.19 | 1.18 | n/a | n/a | n/a |
| Management expense ratio before waivers or absorptions (%) ² | 1.22 | 1.21 | 1.20 | n/a | n/a | n/a |
| Trading expense ratio (%) ³ | 0.05 | 0.05 | 0.05 | n/a | n/a | n/a |
| Portfolio turnover rate (%) ⁴ | 7.81 | 13.83 | 28.21 | n/a | n/a | n/a |
| Net asset value per security (\$) | 12.52 | 11.71 | 10.90 | n/a | n/a | n/a |
| Series G | | | | | | |
| Total net asset value (\$000) ¹ | 1,772 | 1,695 | 1,568 | 1,829 | 1,667 | 1,335 |
| Securities outstanding (000) ¹ | 114 | 116 | 115 | 130 | 118 | 109 |
| Management expense ratio (%) ² | 1.66 | 1.66 | 1.65 | 1.66 | 1.67 | 1.67 |
| Management expense ratio before waivers or absorptions (%) ² | 1.68 | 1.68 | 1.67 | 1.68 | 1.68 | 1.68 |
| Trading expense ratio (%) ³ | 0.05 | 0.05 | 0.05 | 0.07 | 0.11 | 0.11 |
| Portfolio turnover rate (%) ⁴ | 7.81 | 13.83 | 28.21 | 10.95 | 36.04 | 33.68 |
| Net asset value per security (\$) | 15.61 | 14.64 | 13.62 | 14.05 | 14.17 | 12.26 |
| Series I | | | | | | |
| Total net asset value (\$000) ¹ | n/a | n/a | 120 | 133 | 134 | 118 |
| Securities outstanding (000) ¹ | n/a | n/a | 8 | 9 | 9 | 9 |
| Management expense ratio (%) ² | n/a | n/a | 1.81 | 1.82 | 1.83 | 1.81 |
| Management expense ratio before waivers or absorptions (%) ² | n/a | n/a | 1.83 | 1.84 | 1.85 | 1.82 |
| Trading expense ratio (%) ³ | n/a | n/a | 0.05 | 0.07 | 0.11 | 0.11 |
| Portfolio turnover rate (%) ⁴ | n/a | n/a | 28.21 | 10.95 | 36.04 | 33.68 |
| Net asset value per security (\$) | n/a | n/a | 14.83 | 15.32 | 15.46 | 13.38 |

| | Sep. 30 2024 | Mar. 31 2024 | Mar. 31 2023 | Mar. 31 2022 | Mar. 31 2021 | Mar. 31 2020 |
|--|-----------------|-----------------|-----------------|-----------------|-----------------|-----------------|
| Series J | | | | | | |
| Total net asset value (\$000) ¹ | 3,798 | 3,652 | 3,432 | 3,584 | 780 | 898 |
| Securities outstanding (000) ¹ | 222 | 227 | 229 | 232 | 50 | 67 |
| Management expense ratio (%) ² | 1.92 | 1.93 | 1.92 | 1.93 | 1.94 | 1.92 |
| Management expense ratio before waivers or absorptions (%) ² | 1.95 | 1.95 | 1.93 | 1.94 | 1.96 | 1.93 |
| Trading expense ratio (%) ³ | 0.05 | 0.05 | 0.05 | 0.07 | 0.11 | 0.11 |
| Portfolio turnover rate (%) ⁴ | 7.81 | 13.83 | 28.21 | 10.95 | 36.04 | 33.68 |
| Net asset value per security (\$) | 17.13 | 16.09 | 14.97 | 15.48 | 15.60 | 13.50 |
| Series O | | | | | | |
| Total net asset value (\$000) ¹ | 12,832 | 15,088 | 14,212 | 16,800 | 10,278 | 11,880 |
| Securities outstanding (000) ¹ | 541 | 684 | 692 | 806 | 490 | 654 |
| Management expense ratio (%) ² | 0.01 | 0.01 | 0.01 | 0.01 | 0.02 | - |
| Management expense ratio before waivers or absorptions (%) ² | 0.03 | 0.03 | 0.02 | 0.03 | 0.04 | 0.01 |
| Trading expense ratio (%) ³ | 0.05 | 0.05 | 0.05 | 0.07 | 0.11 | 0.11 |
| Portfolio turnover rate (%) ⁴ | 7.81 | 13.83 | 28.21 | 10.95 | 36.04 | 33.68 |
| Net asset value per security (\$) | 23.72 | 22.05 | 20.53 | 20.83 | 20.98 | 18.17 |
| Series O5 | | | | | | |
| Total net asset value (\$000) ¹ | 1,805 | 2,318 | 2,153 | 8,085 | 1 | 47 |
| Securities outstanding (000) ¹ | 130 | 176 | 167 | 585 | - | 4 |
| Management expense ratio (%) ² | 0.01 | 0.01 | 0.01 | 0.01 | 0.02 | - |
| Management expense ratio before waivers or absorptions (%) ² | 0.03 | 0.03 | 0.02 | 0.03 | 0.04 | 0.01 |
| Trading expense ratio (%) ³ | 0.05 | 0.05 | 0.05 | 0.07 | 0.11 | 0.11 |
| Portfolio turnover rate (%) ⁴ | 7.81 | 13.83 | 28.21 | 10.95 | 36.04 | 33.68 |
| Net asset value per security (\$) | 13.83 | 13.17 | 12.88 | 13.81 | 14.10 | 12.40 |
| Series PW | | | | | | |
| Total net asset value (\$000) ¹ | 550,598 | 541,523 | 546,964 | 602,144 | 438,463 | 379,074 |
| Securities outstanding (000) ¹ | 42,387 | 44,368 | 48,166 | 51,207 | 36,965 | 36,929 |
| Management expense ratio (%) ² | 2.06 | 2.06 | 2.05 | 2.07 | 2.08 | 2.05 |
| Management expense ratio before waivers or absorptions (%) ² | 2.08 | 2.08 | 2.07 | 2.08 | 2.09 | 2.06 |
| Trading expense ratio (%) ³ | 0.05 | 0.05 | 0.05 | 0.07 | 0.11 | 0.11 |
| Portfolio turnover rate (%) ⁴ | 7.81 | 13.83 | 28.21 | 10.95 | 36.04 | 33.68 |
| Net asset value per security (\$) | 12.99 | 12.21 | 11.36 | 11.76 | 11.86 | 10.27 |
| Series PWFB | | | | | | |
| Total net asset value (\$000) ¹ | 22,118 | 21,426 | 21,531 | 24,157 | 9,987 | 8,877 |
| Securities outstanding (000) ¹ | 1,889 | 1,959 | 2,115 | 2,317 | 951 | 977 |
| Management expense ratio (%) ² | 0.95 | 0.95 | 0.94 | 0.94 | 0.95 | 0.92 |
| Management expense ratio before waivers or absorptions (%) ² | 0.97 | 0.96 | 0.95 | 0.96 | 0.96 | 0.93 |
| Trading expense ratio (%) ³ | 0.05 | 0.05 | 0.05 | 0.07 | 0.11 | 0.11 |
| Portfolio turnover rate (%) ⁴ | 7.81 | 13.83 | 28.21 | 10.95 | 36.04 | 33.68 |
| Net asset value per security (\$) | 11.71 | 10.94 | 10.18 | 10.42 | 10.50 | 9.09 |

SYMMETRY BALANCED PORTFOLIO

INTERIM MANAGEMENT REPORT OF FUND PERFORMANCE | For the Period Ended September 30, 2024

RATIOS AND SUPPLEMENTAL DATA (cont'd)

| | Sep. 30 2024 | Mar. 31 2024 | Mar. 31 2023 | Mar. 31 2022 | Mar. 31 2021 | Mar. 31 2020 |
|--|-----------------|-----------------|-----------------|-----------------|-----------------|-----------------|
| Series PWFBS | | | | | | |
| Total net asset value (\$000) ¹ | 3 | 3 | 3 | 110 | 1 | 1 |
| Securities outstanding (000) ¹ | – | – | – | 8 | – | – |
| Management expense ratio (%) ² | 0.96 | 0.97 | 0.90 | 0.91 | 0.99 | 0.96 |
| Management expense ratio before waivers or absorptions (%) ² | 0.99 | 0.99 | 0.91 | 0.93 | 1.00 | 0.97 |
| Trading expense ratio (%) ³ | 0.05 | 0.05 | 0.05 | 0.07 | 0.11 | 0.11 |
| Portfolio turnover rate (%) ⁴ | 7.81 | 13.83 | 28.21 | 10.95 | 36.04 | 33.68 |
| Net asset value per security (\$) | 13.33 | 12.75 | 12.46 | 13.48 | 13.89 | 12.29 |
| Series PWR | | | | | | |
| Total net asset value (\$000) ¹ | 76,340 | 61,902 | 45,586 | 37,853 | 19,812 | 9,808 |
| Securities outstanding (000) ¹ | 6,675 | 5,761 | 4,560 | 3,658 | 1,898 | 1,086 |
| Management expense ratio (%) ² | 2.04 | 2.04 | 2.04 | 2.05 | 2.07 | 2.05 |
| Management expense ratio before waivers or absorptions (%) ² | 2.06 | 2.06 | 2.05 | 2.06 | 2.08 | 2.06 |
| Trading expense ratio (%) ³ | 0.05 | 0.05 | 0.05 | 0.07 | 0.11 | 0.11 |
| Portfolio turnover rate (%) ⁴ | 7.81 | 13.83 | 28.21 | 10.95 | 36.04 | 33.68 |
| Net asset value per security (\$) | 11.44 | 10.75 | 10.00 | 10.35 | 10.44 | 9.03 |
| Series PWT5 | | | | | | |
| Total net asset value (\$000) ¹ | 13,536 | 13,304 | 16,497 | 19,630 | 3,039 | 3,392 |
| Securities outstanding (000) ¹ | 1,120 | 1,144 | 1,451 | 1,577 | 235 | 292 |
| Management expense ratio (%) ² | 2.06 | 2.07 | 2.06 | 2.07 | 2.08 | 2.06 |
| Management expense ratio before waivers or absorptions (%) ² | 2.09 | 2.08 | 2.08 | 2.08 | 2.09 | 2.07 |
| Trading expense ratio (%) ³ | 0.05 | 0.05 | 0.05 | 0.07 | 0.11 | 0.11 |
| Portfolio turnover rate (%) ⁴ | 7.81 | 13.83 | 28.21 | 10.95 | 36.04 | 33.68 |
| Net asset value per security (\$) | 12.08 | 11.63 | 11.37 | 12.45 | 12.96 | 11.62 |
| Series PWT8 | | | | | | |
| Total net asset value (\$000) ¹ | 11,179 | 11,009 | 11,503 | 11,984 | 1,006 | 848 |
| Securities outstanding (000) ¹ | 1,139 | 1,148 | 1,190 | 1,093 | 86 | 78 |
| Management expense ratio (%) ² | 2.02 | 2.03 | 2.03 | 2.04 | 2.04 | 2.02 |
| Management expense ratio before waivers or absorptions (%) ² | 2.04 | 2.04 | 2.05 | 2.05 | 2.05 | 2.03 |
| Trading expense ratio (%) ³ | 0.05 | 0.05 | 0.05 | 0.07 | 0.11 | 0.11 |
| Portfolio turnover rate (%) ⁴ | 7.81 | 13.83 | 28.21 | 10.95 | 36.04 | 33.68 |
| Net asset value per security (\$) | 9.81 | 9.59 | 9.67 | 10.96 | 11.76 | 10.88 |
| Series PWX | | | | | | |
| Total net asset value (\$000) ¹ | 26,568 | 26,659 | 25,538 | 29,636 | 18,008 | 18,751 |
| Securities outstanding (000) ¹ | 1,931 | 2,084 | 2,144 | 2,453 | 1,481 | 1,781 |
| Management expense ratio (%) ² | 0.01 | 0.01 | 0.01 | 0.01 | 0.02 | – |
| Management expense ratio before waivers or absorptions (%) ² | 0.03 | 0.03 | 0.02 | 0.03 | 0.04 | 0.01 |
| Trading expense ratio (%) ³ | 0.05 | 0.05 | 0.05 | 0.07 | 0.11 | 0.11 |
| Portfolio turnover rate (%) ⁴ | 7.81 | 13.83 | 28.21 | 10.95 | 36.04 | 33.68 |
| Net asset value per security (\$) | 13.76 | 12.79 | 11.91 | 12.08 | 12.16 | 10.53 |

| | Sep. 30 2024 | Mar. 31 2024 | Mar. 31 2023 | Mar. 31 2022 | Mar. 31 2021 | Mar. 31 2020 |
|--|-----------------|-----------------|-----------------|-----------------|-----------------|-----------------|
| Series PWX8 | | | | | | |
| Total net asset value (\$000) ¹ | 214 | 207 | 1 | 1 | 1 | 1 |
| Securities outstanding (000) ¹ | 17 | 17 | – | – | – | – |
| Management expense ratio (%) ² | 0.01 | 0.01 | 0.01 | 0.01 | 0.02 | – |
| Management expense ratio before waivers or absorptions (%) ² | 0.03 | 0.03 | 0.02 | 0.03 | 0.04 | 0.01 |
| Trading expense ratio (%) ³ | 0.05 | 0.05 | 0.05 | 0.07 | 0.11 | 0.11 |
| Portfolio turnover rate (%) ⁴ | 7.81 | 13.83 | 28.21 | 10.95 | 36.04 | 33.68 |
| Net asset value per security (\$) | 12.53 | 12.11 | 12.21 | 13.55 | 14.31 | 12.99 |
| Series S | | | | | | |
| Total net asset value (\$000) ¹ | 10,392 | 9,708 | 8,901 | 8,834 | 8,317 | 6,806 |
| Securities outstanding (000) ¹ | 762 | 766 | 752 | 721 | 674 | 635 |
| Management expense ratio (%) ² | 0.03 | 0.04 | 0.03 | 0.04 | 0.05 | 0.03 |
| Management expense ratio before waivers or absorptions (%) ² | 0.06 | 0.05 | 0.05 | 0.06 | 0.06 | 0.04 |
| Trading expense ratio (%) ³ | 0.05 | 0.05 | 0.05 | 0.07 | 0.11 | 0.11 |
| Portfolio turnover rate (%) ⁴ | 7.81 | 13.83 | 28.21 | 10.95 | 36.04 | 33.68 |
| Net asset value per security (\$) | 13.63 | 12.68 | 11.84 | 12.26 | 12.34 | 10.72 |
| Series T5 | | | | | | |
| Total net asset value (\$000) ¹ | 2,614 | 2,593 | 3,325 | 5,668 | 1,364 | 1,519 |
| Securities outstanding (000) ¹ | 238 | 245 | 321 | 499 | 115 | 143 |
| Management expense ratio (%) ² | 2.29 | 2.30 | 2.29 | 2.30 | 2.32 | 2.29 |
| Management expense ratio before waivers or absorptions (%) ² | 2.32 | 2.32 | 2.30 | 2.31 | 2.33 | 2.30 |
| Trading expense ratio (%) ³ | 0.05 | 0.05 | 0.05 | 0.07 | 0.11 | 0.11 |
| Portfolio turnover rate (%) ⁴ | 7.81 | 13.83 | 28.21 | 10.95 | 36.04 | 33.68 |
| Net asset value per security (\$) | 10.98 | 10.58 | 10.35 | 11.36 | 11.85 | 10.64 |
| Series T8 | | | | | | |
| Total net asset value (\$000) ¹ | 843 | 1,085 | 1,483 | 1,856 | 413 | 571 |
| Securities outstanding (000) ¹ | 108 | 142 | 193 | 212 | 44 | 65 |
| Management expense ratio (%) ² | 2.27 | 2.25 | 2.25 | 2.28 | 2.30 | 2.26 |
| Management expense ratio before waivers or absorptions (%) ² | 2.29 | 2.27 | 2.27 | 2.30 | 2.31 | 2.27 |
| Trading expense ratio (%) ³ | 0.05 | 0.05 | 0.05 | 0.07 | 0.11 | 0.11 |
| Portfolio turnover rate (%) ⁴ | 7.81 | 13.83 | 28.21 | 10.95 | 36.04 | 33.68 |
| Net asset value per security (\$) | 7.80 | 7.63 | 7.69 | 8.74 | 9.40 | 8.72 |
| Series LB | | | | | | |
| Total net asset value (\$000) ¹ | 172,527 | 174,631 | 186,109 | 210,044 | 210,359 | 194,597 |
| Securities outstanding (000) ¹ | 12,743 | 13,706 | 15,702 | 17,061 | 16,934 | 18,103 |
| Management expense ratio (%) ² | 2.36 | 2.36 | 2.36 | 2.37 | 2.38 | 2.36 |
| Management expense ratio before waivers or absorptions (%) ² | 2.39 | 2.38 | 2.38 | 2.39 | 2.39 | 2.36 |
| Trading expense ratio (%) ³ | 0.05 | 0.05 | 0.05 | 0.07 | 0.11 | 0.11 |
| Portfolio turnover rate (%) ⁴ | 7.81 | 13.83 | 28.21 | 10.95 | 36.04 | 33.68 |
| Net asset value per security (\$) | 13.54 | 12.74 | 11.85 | 12.31 | 12.42 | 10.75 |

SYMMETRY BALANCED PORTFOLIO

INTERIM MANAGEMENT REPORT OF FUND PERFORMANCE | For the Period Ended September 30, 2024

RATIOS AND SUPPLEMENTAL DATA (cont'd)

| Series LF | Sep. 30 2024 | Mar. 31 2024 | Mar. 31 2023 | Mar. 31 2022 | Mar. 31 2021 | Mar. 31 2020 |
|--|-----------------|-----------------|-----------------|-----------------|-----------------|-----------------|
| Total net asset value (\$000) ¹ | 105,033 | 95,168 | 97,776 | 108,830 | 45,082 | 34,259 |
| Securities outstanding (000) ¹ | 8,703 | 8,439 | 9,316 | 10,122 | 4,162 | 3,654 |
| Management expense ratio (%) ² | 0.98 | 0.99 | 0.98 | 0.99 | 1.00 | 0.98 |
| Management expense ratio before waivers or absorptions (%) ² | 1.01 | 1.00 | 1.00 | 1.01 | 1.01 | 0.98 |
| Trading expense ratio (%) ³ | 0.05 | 0.05 | 0.05 | 0.07 | 0.11 | 0.11 |
| Portfolio turnover rate (%) ⁴ | 7.81 | 13.83 | 28.21 | 10.95 | 36.04 | 33.68 |
| Net asset value per security (\$) | 12.07 | 11.28 | 10.50 | 10.75 | 10.83 | 9.38 |

| Series LF5 | Sep. 30 2024 | Mar. 31 2024 | Mar. 31 2023 | Mar. 31 2022 | Mar. 31 2021 | Mar. 31 2020 |
|--|-----------------|-----------------|-----------------|-----------------|-----------------|-----------------|
| Total net asset value (\$000) ¹ | 12,125 | 11,333 | 11,189 | 15,225 | 1,739 | 1,614 |
| Securities outstanding (000) ¹ | 834 | 815 | 823 | 1,034 | 115 | 120 |
| Management expense ratio (%) ² | 0.98 | 0.99 | 0.98 | 0.99 | 1.00 | 0.98 |
| Management expense ratio before waivers or absorptions (%) ² | 1.01 | 1.00 | 1.00 | 1.01 | 1.01 | 0.98 |
| Trading expense ratio (%) ³ | 0.05 | 0.05 | 0.05 | 0.07 | 0.11 | 0.11 |
| Portfolio turnover rate (%) ⁴ | 7.81 | 13.83 | 28.21 | 10.95 | 36.04 | 33.68 |
| Net asset value per security (\$) | 14.53 | 13.91 | 13.60 | 14.73 | 15.18 | 13.47 |

| Series LM | Sep. 30 2024 | Mar. 31 2024 | Mar. 31 2023 | Mar. 31 2022 | Mar. 31 2021 | Mar. 31 2020 |
|--|-----------------|-----------------|-----------------|-----------------|-----------------|-----------------|
| Total net asset value (\$000) ¹ | 16,230 | 17,272 | 20,169 | 24,620 | 28,306 | 31,755 |
| Securities outstanding (000) ¹ | 2,208 | 2,437 | 2,911 | 3,235 | 3,563 | 4,446 |
| Management expense ratio (%) ² | 2.36 | 2.36 | 2.36 | 2.37 | 2.38 | 2.36 |
| Management expense ratio before waivers or absorptions (%) ² | 2.39 | 2.38 | 2.38 | 2.39 | 2.39 | 2.36 |
| Trading expense ratio (%) ³ | 0.05 | 0.05 | 0.05 | 0.07 | 0.11 | 0.11 |
| Portfolio turnover rate (%) ⁴ | 7.81 | 13.83 | 28.21 | 10.95 | 36.04 | 33.68 |
| Net asset value per security (\$) | 7.35 | 7.09 | 6.93 | 7.61 | 7.95 | 7.14 |

| Series LW | Sep. 30 2024 | Mar. 31 2024 | Mar. 31 2023 | Mar. 31 2022 | Mar. 31 2021 | Mar. 31 2020 |
|--|-----------------|-----------------|-----------------|-----------------|-----------------|-----------------|
| Total net asset value (\$000) ¹ | 345,683 | 333,592 | 371,853 | 415,944 | 303,479 | 246,066 |
| Securities outstanding (000) ¹ | 31,059 | 31,887 | 38,206 | 41,240 | 29,827 | 27,947 |
| Management expense ratio (%) ² | 2.13 | 2.13 | 2.13 | 2.14 | 2.15 | 2.13 |
| Management expense ratio before waivers or absorptions (%) ² | 2.16 | 2.15 | 2.15 | 2.16 | 2.16 | 2.13 |
| Trading expense ratio (%) ³ | 0.05 | 0.05 | 0.05 | 0.07 | 0.11 | 0.11 |
| Portfolio turnover rate (%) ⁴ | 7.81 | 13.83 | 28.21 | 10.95 | 36.04 | 33.68 |
| Net asset value per security (\$) | 11.13 | 10.46 | 9.73 | 10.09 | 10.17 | 8.80 |

| Series LW5 | Sep. 30 2024 | Mar. 31 2024 | Mar. 31 2023 | Mar. 31 2022 | Mar. 31 2021 | Mar. 31 2020 |
|--|-----------------|-----------------|-----------------|-----------------|-----------------|-----------------|
| Total net asset value (\$000) ¹ | 67,677 | 68,301 | 78,960 | 95,346 | 70,941 | 66,411 |
| Securities outstanding (000) ¹ | 5,548 | 5,814 | 6,875 | 7,576 | 5,410 | 5,645 |
| Management expense ratio (%) ² | 2.13 | 2.13 | 2.13 | 2.14 | 2.15 | 2.13 |
| Management expense ratio before waivers or absorptions (%) ² | 2.16 | 2.15 | 2.15 | 2.16 | 2.16 | 2.13 |
| Trading expense ratio (%) ³ | 0.05 | 0.05 | 0.05 | 0.07 | 0.11 | 0.11 |
| Portfolio turnover rate (%) ⁴ | 7.81 | 13.83 | 28.21 | 10.95 | 36.04 | 33.68 |
| Net asset value per security (\$) | 12.20 | 11.75 | 11.48 | 12.59 | 13.11 | 11.76 |

| Series LX | Sep. 30 2024 | Mar. 31 2024 | Mar. 31 2023 | Mar. 31 2022 | Mar. 31 2021 | Mar. 31 2020 |
|--|-----------------|-----------------|-----------------|-----------------|-----------------|-----------------|
| Total net asset value (\$000) ¹ | 5,506 | 5,994 | 6,892 | 7,527 | 6,887 | 6,807 |
| Securities outstanding (000) ¹ | 515 | 582 | 685 | 681 | 596 | 656 |
| Management expense ratio (%) ² | 2.36 | 2.36 | 2.36 | 2.37 | 2.38 | 2.36 |
| Management expense ratio before waivers or absorptions (%) ² | 2.39 | 2.38 | 2.38 | 2.39 | 2.39 | 2.36 |
| Trading expense ratio (%) ³ | 0.05 | 0.05 | 0.05 | 0.07 | 0.11 | 0.11 |
| Portfolio turnover rate (%) ⁴ | 7.81 | 13.83 | 28.21 | 10.95 | 36.04 | 33.68 |
| Net asset value per security (\$) | 10.68 | 10.30 | 10.07 | 11.06 | 11.55 | 10.38 |

Management Fees

The management fee for each applicable series is calculated and accrued daily as a percentage of its NAV. The Fund's management fees were used by the Manager to pay for the costs of managing the investment portfolio of the Fund and/or the underlying fund(s), as applicable, including providing investment analysis and recommendations, making investment decisions, making brokerage arrangements for the purchase and sale of the investment portfolio, and providing other services. The Manager also used the management fees to fund sales commissions, trailing commissions and any other compensation (collectively "distribution-related payments") to registered dealers and brokers whose clients invest in the Fund.

LBC Financial Services Inc. ("LBC") is the principal distributor for the LBC series securities of the Fund (as listed under *Fund Formation and Series Information*) and receives a portion of the management fees that the Fund pays to the Manager. Under this arrangement, LBC was entitled to approximately 25% of the total management fees that the Manager received from the LBC series of all Mackenzie funds during the period. The Manager is responsible for paying all distribution-related payments to LBC-authorized dealers whose clients invest in the LBC series of the Fund.

The following dealers affiliated with the Manager may be entitled to distribution-related payments from the Manager on the same basis as unrelated registered brokers and dealers: Investors Group Securities Inc. and Investors Group Financial Services Inc.

The Manager used approximately 42% of the total management fee revenues received from all Mackenzie funds during the period to fund distribution-related payments to registered dealers and brokers. In comparison, such distribution-related payments for the Fund represented on average 40% of the management fees paid by all applicable series of the Fund during the period. The actual percentage for each series may be higher or lower than the average depending on the level of trailing commissions and sales commissions paid for that series.

SYMMETRY BALANCED PORTFOLIO

INTERIM MANAGEMENT REPORT OF FUND PERFORMANCE | For the Period Ended September 30, 2024

Fund Formation and Series Information

The Fund may have undergone a number of changes, such as a reorganization or a change in manager, mandate or name. A history of the major changes affecting the Fund in the last 10 years can be found in the Fund's Simplified Prospectus.

Date of Formation: November 19, 2008

The Fund may issue an unlimited number of securities of each series. The number of issued and outstanding securities of each series is disclosed under *Financial Highlights*.

Series Offered by Mackenzie Financial Corporation (180 Queen Street West, Toronto, Ontario, M5V 3K1; 1-800-387-0614; www.mackenzieinvestments.com)

Series A, Series T5 and Series T8 securities are offered to retail investors investing a minimum of \$500 (\$5,000 for Series T5 and Series T8). Investors in Series T5 and Series T8 securities also want to receive a monthly cash flow of 5% or 8% per year, respectively.

Series AR securities are offered to retail investors in a Registered Disability Savings Plan offered by Mackenzie.

Series D securities are offered to retail investors investing a minimum of \$500 through a discount brokerage or other account approved by Mackenzie.

Series F, Series F5 and Series F8 securities are offered to investors who are enrolled in a dealer-sponsored fee-for-service or wrap program, who are subject to an asset-based fee rather than commissions on each transaction and who invest at least \$500 (\$5,000 for Series F5 and Series F8); they are also available to employees of Mackenzie and its subsidiaries, and directors of Mackenzie. Investors in Series F5 and Series F8 securities also want to receive a monthly cash flow of 5% or 8% per year, respectively.

Series FB and Series FB5 securities are offered to retail investors investing a minimum of \$500. Investors are required to negotiate their advisor service fee, which cannot exceed 1.50%, with their financial advisor. Investors in Series FB5 securities also want to receive a monthly cash flow of 5% per year.

Series FR securities are offered to retail investors in a Registered Disability Savings Plan offered by Mackenzie through the Ontario Government Office of the Public Guardian and Trustee (OPGT), or similar programs.

Series O and Series O5 securities are offered only to investors investing a minimum of \$500,000 who are enrolled in Mackenzie Portfolio Architecture Service or Open Architecture Service; certain institutional investors; investors in a qualified group plan, and certain qualifying employees of Mackenzie and its subsidiaries. Investors in Series O5 securities also want to receive a monthly cash flow of 5% per year.

Series PW, Series PWT5 and Series PWT8 securities are offered through our Private Wealth Solutions to certain high net worth investors who invest a minimum of \$100,000. Investors in Series PWT5 and Series PWT8 securities also want to receive a monthly cash flow of 5% or 8% per year, respectively.

Series PWFB and Series PWFB5 securities are offered through our Private Wealth Solutions to certain high net worth investors who invest a minimum of \$100,000. Investors are required to negotiate their advisor service fee, which cannot exceed 1.50%, with their financial advisor. Investors in Series PWFB5 securities also want to receive a monthly cash flow of 5% per year.

Series PWR securities are offered through our Private Wealth Solutions to certain high net worth investors who invest a minimum of \$100,000 in a Registered Disability Savings Plan offered by Mackenzie.

Series PWX and Series PWX8 securities are offered through our Private Wealth Solutions to certain high net worth investors who invest a minimum of \$100,000. Investors are required to negotiate their advisor service fee, which cannot exceed 1.50%, with their financial advisor. Investors in Series PWX8 securities also want to receive a monthly cash flow of 8% per year.

Series S securities are offered to The Canada Life Assurance Company and certain other mutual funds, but may be sold to other investors as determined by Mackenzie.

Series B and Series C securities were created specifically for the purpose of implementing mergers affecting the Fund and are not available for sale.

Series G securities are no longer available for sale, except for additional purchases by investors who have held these securities since December 11, 2017.

Series I and Series J securities are no longer available for sale.

Series Distributed by LBC Financial Services Inc. (1360 René-Lévesque Blvd. West, 13th Floor, Montréal, Québec H3G 0A9; 1-800-522-1846; www.laurentianbank.ca/mackenzie)

Series LB and Series LX securities are offered to retail investors investing a minimum of \$500 (\$5,000 for Series LX). Investors in Series LX securities also want to receive a monthly cash flow of 5% per year.

Series LF and Series LF5 securities are offered to retail investors investing a minimum of \$500 (\$5,000 for Series LF5), who are enrolled in the LBC Private Banking sponsored fee-for-service program. Investors in Series LF5 securities also want to receive a monthly cash flow of 5% per year.

Series LW and Series LW5 securities are offered through our Preferred Pricing Program to certain high net worth investors who invest a minimum of \$100,000. Investors in Series LW5 securities also want to receive a monthly cash flow of 5% per year.

Series LM securities are no longer available for sale, except that pre-authorized contribution plans that were in place as at November 25, 2015, may continue.

Effective June 1, 2022, an investor may purchase the Fund under a sales charge purchase option and a no-load purchase option. Not all purchase options are available under each series of the Fund. The sales charge under the sales charge purchase option is negotiated by the investor with their dealer. Securities purchased before June 1, 2022, under the redemption charge purchase option and low-load 3 purchase option (collectively the "deferred sales charge purchase options") may continue to be held in investor accounts. Investors may switch from securities of a Mackenzie fund previously purchased under these deferred sales charge purchase options to securities of other Mackenzie funds, under the same purchase option, until such time as the redemption schedule has expired. For further details, please refer to the Fund's Simplified Prospectus and Fund Facts.

SYMMETRY BALANCED PORTFOLIO

INTERIM MANAGEMENT REPORT OF FUND PERFORMANCE | For the Period Ended September 30, 2024

Fund Formation and Series Information (cont'd)

| Series | Inception/ Reinstatement Date | Management Fee | Administration Fee |
|--------------|----------------------------------|------------------|--------------------|
| Series A | November 24, 2008 | 1.85% | 0.20% |
| Series AR | November 18, 2011 | 1.85% | 0.20% |
| Series B | May 6, 2011 | 1.85% | 0.20% |
| Series C | May 13, 2011 | 1.76% | 0.27% |
| Series D | March 19, 2014 | 0.85% | 0.16% |
| Series F | December 22, 2008 | 0.70% | 0.15% |
| Series F5 | October 28, 2014 | 0.70% | 0.15% |
| Series F8 | October 24, 2018 | 0.70% | 0.15% |
| Series FB | October 26, 2015 | 0.85% | 0.20% |
| Series FB5 | October 26, 2015 | 0.85% | 0.20% |
| Series FR | October 3, 2022 | 0.85% | 0.20% |
| Series G | July 29, 2009 | 1.35% | 0.20% |
| Series I | None issued ⁽³⁾ | 1.40% | 0.20% |
| Series J | February 18, 2009 | 1.50% | 0.20% |
| Series O | April 1, 2010 | — ⁽¹⁾ | n/a |
| Series O5 | October 16, 2017 | — ⁽¹⁾ | n/a |
| Series PW | October 11, 2013 | 1.70% | 0.15% |
| Series PWFB | April 3, 2017 | 0.70% | 0.15% |
| Series PWFB5 | April 3, 2017 | 0.70% | 0.15% |
| Series PWR | April 1, 2019 | 1.70% | 0.15% |
| Series PWT5 | April 3, 2017 | 1.70% | 0.15% |
| Series PWT8 | April 3, 2017 | 1.70% | 0.15% |
| Series PWX | December 19, 2013 | — ⁽²⁾ | — ⁽²⁾ |
| Series PWX8 | October 24, 2018 | — ⁽²⁾ | — ⁽²⁾ |
| Series S | January 31, 2013 | — ⁽¹⁾ | 0.025% |
| Series T5 | May 13, 2013 | 1.85% | 0.20% |
| Series T8 | May 14, 2013 | 1.85% | 0.20% |
| Series LB | January 18, 2012 | 1.85% | 0.20% |
| Series LF | December 7, 2018 | 0.70% | 0.15% |
| Series LF5 | December 7, 2018 | 0.70% | 0.15% |
| Series LM | January 30, 2012 | 1.85% | 0.20% |
| Series LW | December 1, 2017 | 1.70% | 0.15% |
| Series LW5 | December 1, 2017 | 1.70% | 0.15% |
| Series LX | May 14, 2013 | 1.85% | 0.20% |

(1) This fee is negotiable and payable directly to Mackenzie by investors in this series.

(2) This fee is payable directly to Mackenzie by investors in this series through redemptions of their securities.

(3) The series' original start date was January 27, 2009. All securities in the series were redeemed on January 12, 2024.